



Xtream S8

360° Conference Call Bluetooth Speaker with Microphone and USB 3.0 Hubs



QuickGuide

English

www.adesso.com

①

LIMITED WARRANTY

ADESSO provides one year limited warranty for the quality of all its products in materials and workmanship.

During this period, ADESSO will repair or replace all merchandise, which proved to be defective. However, ADESSO will not warranty any product which has been subjected to improper freight Handling, shipping abuse, neglect or unauthorized repair or installation. The warranty also will not cover products installed with Non-ADESSO components and product with broken sealed and assembly trace. After replacement of RMA, ADESSO reserves the right to request the total cost of the replacement products with broken seals or assembly trace.

If you discover a defect, Adesso will, at its option, repair or replace the product at no charge to you, provided you return it during the warranty period with transportation charges pre-paid to Adesso. You must contact Adesso at support@adesso.com for a Return Merchandise Authorization number (RMA) prior to returning any product. For each product returned for warranty service, please include your name, shipping address (no P.O. Box), telephone number, copy of the bill of sale as proof of purchase and have the package clearly marked with your RMA number.

SUPPORT

FAQ's: <http://www.adesso.com/faqs>

Email Support: support@adesso.com

Telephone Support:
Toll Free: (800) 795-6788
9:00AM to 5:00PM PST Monday - Friday

MORE LANGUAGE



②

LIMITED WARRANTY

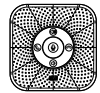
Adesso's Xtream S8 is a 360° Conference call bluetooth speaker with microphone and USB 3.0 hubs. With the S8 conference speaker, not only can be applied to the conference room of the office building, providing more people with high-quality remote conference services, offering clear voice quality in noisy environments, like a café of the business district but can also be a good solution for working at home.

SPECIFICATION

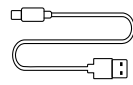
Connectivity	Bluetooth 5.0
Power Source	USB 5V
Output Power	10W*2
Built-in Rechargeable Battery	Yes
Battery Capacity	Lithium 2000mAh
Charging Time	2 hrs
Built-in Mic	Yes
Impedance	4 ohm
Frequency Response	90hz-20khz
Product Size	16.96(L) x 2.36 (W) x 2.36(H) In 380(L) x 60 (W) x 60(H) mm
Weight	1.17 lbs (0.53kg)
Cable Length	6 ft (1.8M)

③

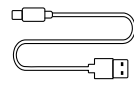
CONTENTS



A
Wireless Speakers



B
USB To USB

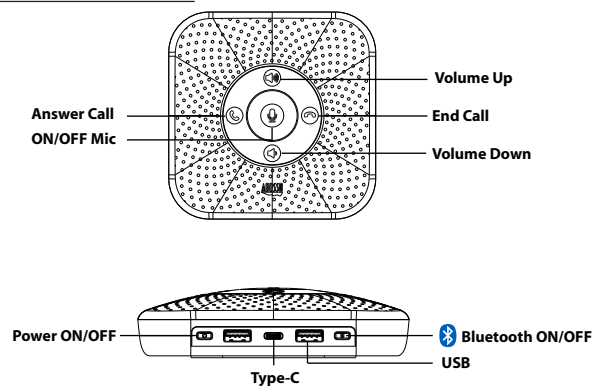


C
USB Type C



D
Quick Start Guide

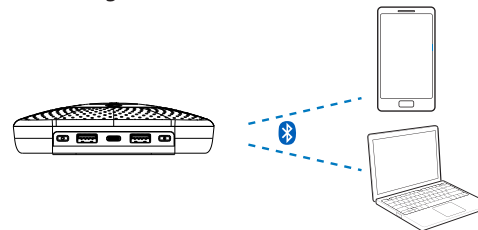
PRODUCT OVERVIEW



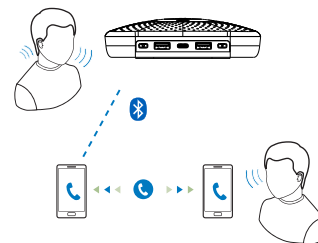
④

GETTING STARTED

1. Connect Through Bluetooth enabled device



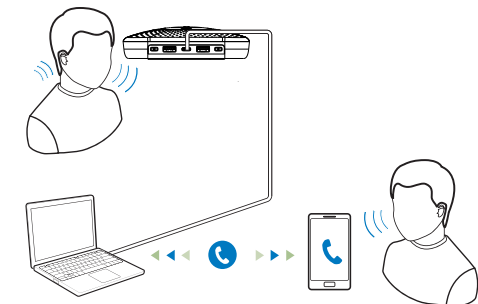
- Enable Bluetooth on your bluetooth-enabled device.
- Select **Xtream S8** on your bluetooth-enabled device and if necessary input "0000" as the pairing password. After successful pairing and connection. The bluetooth-enabled device will indicates connected.



⑤

NOTE: If the Xtream S8 speaker has been connected to a Bluetooth-enabled mobile phone or other devices such as a tablet or PC/Mac, Make a VoIP call on your mobile device.

2. Connect Through a USB Cable



- Connect the Xtream S8 to a PC/Mac through the supplied USB Cable.
- The PC/Mac will automatically detect the speaker and ready to use.

NOTE: The USB cable charges the Xtream S8 speaker and can also be used to connect to a PC/Mac to enjoy music or use it as a speaker phone when you make VoIP calls.

⑥