



# Bluetooth® Mini Touchpad Keyboard



Bluetooth®

Model: WKB-4120DB

## QuickGuide

English

www.adesso.com

①

### LIMITED WARRANTY

Adesso provides a one year limited warranty for all of its products against defects in material and workmanship.

During this period, Adesso will repair or replace any product which proves to be defective. However, Adesso will not warranty any product which has been subject to improper freight handling, shipping abuse, neglect, improper installation or unauthorized repair. The warranty will not cover products installed with components not approved by Adesso and products where the sealed assembly trace has been broken.

If you discover a defect, Adesso will, at its option, repair or replace the product at no charge to you provided you return it during the warranty period with freight charges pre-paid to Adesso. Before returning any product, you must obtain a Return Merchandise Authorization number (RMA). This RMA # must be clearly marked on the outside of the package you are returning for warranty service. Be certain to also include your name, shipping address (no PO Boxes), telephone number, and a copy of the invoice showing proof of purchase in the package.

### SUPPORT

We have listed most of our FAQ's (Frequently Asked Questions) at: <http://www.adesso.com/faqs.asp>. Please visit our FAQ Service & Support pages before you contact our E-mail or Telephone Support.

**Email Support:** If our FAQ's do not help you resolve your issues, please email [support@adesso.com](mailto:support@adesso.com)

**Telephone Support:**  
Toll Free: (800) 795-6788  
9:00AM to 5:00PM PST Monday - Friday

②

### INTRODUCTION

Simply designed for convenience and utility, the aluminum Bluetooth keyboard combined with a cover that converts into a stand holding the Ipad 11 version. Turn your mobile device into a mobile workstation wherever you are. The slim case magnetically secures and protects the tablet and keyboard when traveling. The low profile scissor-switch keys provide a tactile response for faster typing. At only 6mm thick, the lightweight yet sturdy aluminum keyboard works equally well on the road or in your home office.

### SPECIFICATIONS

Connection:	Bluetooth 5.1
Operating Distance:	10 m
Modulation System:	GFSK
Working Voltage:	3.3-4.2V
Charging Current:	250 mA
Standby Time:	90 days
Lithium Battery Capacity:	500 mAh (no backlight 280mAh)
Continous Working Time:	< 2.5 hours (backlit on), 150 hours (backlit off)
Charging Time:	< 3 hours
Lithium Battery Life:	3 years
Key Life:	> 5 million strokes
Operating Temperature:	-10-55°C

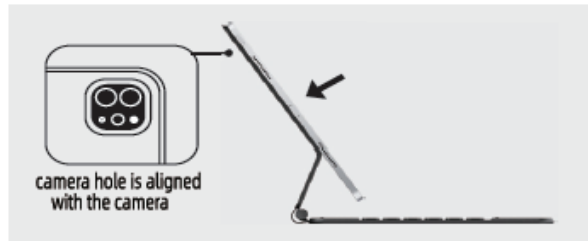
### REQUIREMENTS

- Bluetooth® 5.1, 5.0, 4.0 / Ipad Pro 11 2020/2021/2018/2022

③

### Installation

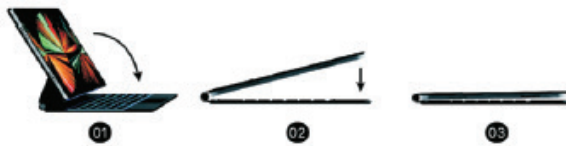
1. Installation - Set iPad on the magnetic stand as shown below



2. Removal - Pull up to remove your iPad from the stand



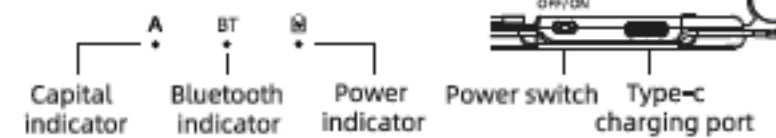
3. Mobility - You can place the iPad in the case and fold the case for easy portability



④

### Keyboard Description

\*\* Please read the operating instructions carefully before use \*\*



### Connection

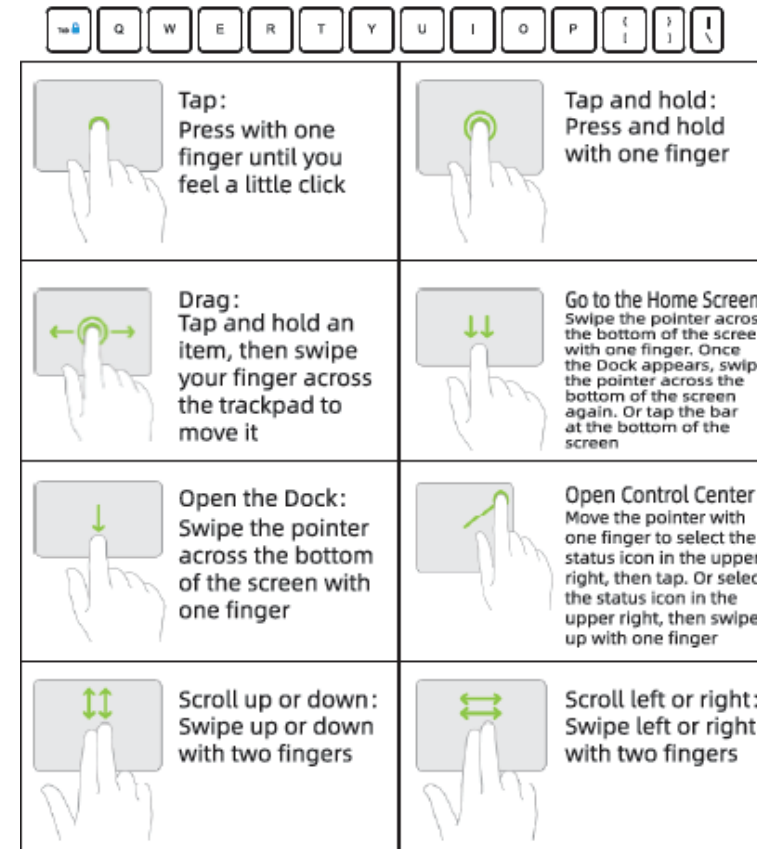
Connect with your iPad

1. Turn on keyboard, power, long press key for the three seconds, then keyboard pairing light flashes
2. Go to iPad Settings.
3. Turn on Bluetooth on your iPad and keep "ON".
4. Search menu-Other devices "Wireless Keyboard" The wireless signal light is off after paired successfully.
- 5.

⑤

### Reset settings

7. Press [Fn] + [Esc] for 3 seconds then indicator flashes 3 times to clear the keyboard pairing information and return to the second level of white backlight



⑧

### Description of Function Keys

Button Icon	System Function of iPad 11 inch	Button Icon	System Function of iPad 11 inch
[Home]	Fn+this key: Home	[Search]	Fn+this key: Search
[Virtual Keyboard]	Fn+this key: Virtual keyboard	[Screenshot]	Fn+this key: Screenshot
[Brightness -]	Fn+this key: Reduce brightness	[Brightness +]	Fn+this key: Increase brightness
[Previous Song]	Fn+this key: Previous song	[Play/Pause]	Fn+this key: Play/Pause
[Next Song]	Fn+ this key: Next song	[Mute]	Fn+ this key: Mute
[Volume -]	Fn+ this key: Volume-	[Volume +]	Fn+this key: Volume+
[Pair]	Long press to pair	[Lock Screen]	Fn+this key: Lock screen
[Switch Languages]	Press this key to switch languages	[Brightness]	Fn+this key: Brightness of the light
[Backlight Colors]	Fn+This key: change backlight colors	[Voice Input]	Double-click this key for voice input
[Beginning of Line]	Fn+this key: Beginning of the line	[End of Line]	Fn+this key: The end of the line
[Beginning of Page]	Fn+this key: Beginning of the page	[End of Page]	Fn+this key: The end of the page
ON/OFF	Power switch Pull up ON and pull down OFF	Awake Siri	Open Settings → Siri and Search → Press the top button to use Siri → +5 key

⑥

1. Power on indicator  
Turn ON, the red light is always on for 1 second and then goes off. When the power is less than 20%, the red light flashes slowly to indicate low battery. Turn OFF, the keyboard stops working.

- Bluetooth connection method  
a. Turn ON, the red light is always on for 1 second and then goes off, Bluetooth indicator flashes to enter pairing state.  
b. Re-pairing, long press key for 3 seconds to enter pairing mode, blue light flashes 3 times per second to enter pairing mode, the fast broadcast time is 180 seconds, blue light is off when the pairing is successful; if the pairing is not successful, the backlight and other indicators all go off and the keyboard goes into sleep mode.

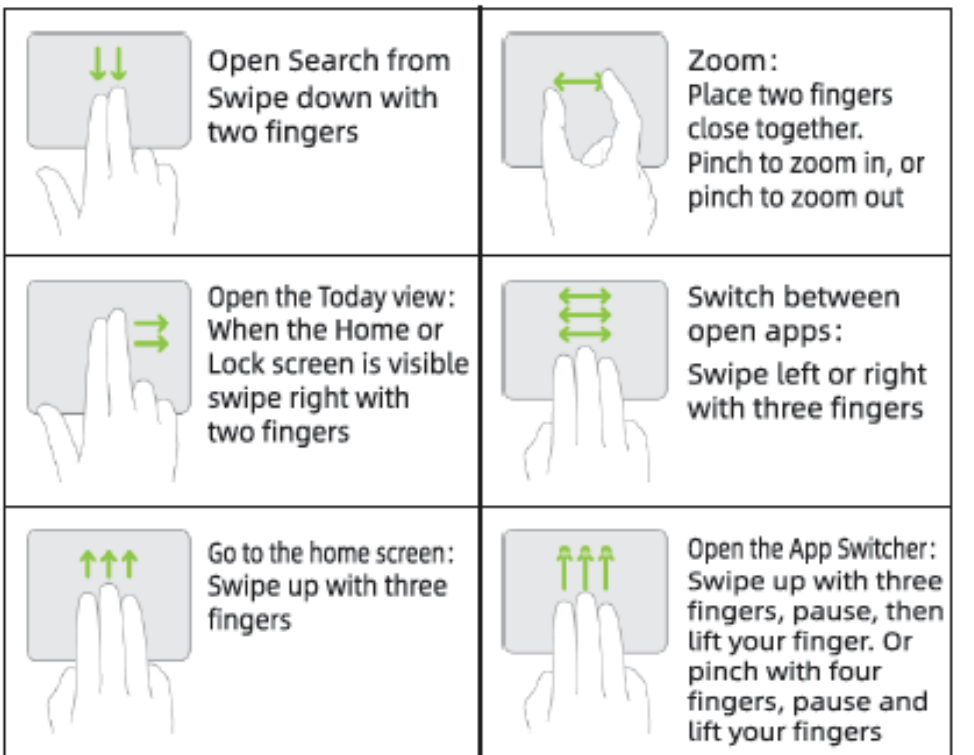
- Reconnect bluetooth indicator  
After the first pairing is successful, turn off the keyboard and turn on the keyboard, and then automatically enter the bluetooth reconnection mode. The blue light flashes 3 times per second to enter the reconnection state. The blue indicator turns off after successful connection within 5 seconds. If the

- Charging indicator  
When Type-C charging, the red light is always on. The red light is off when fully charged, and the green light is always on. Low battery indicator: When the battery power is less than 20% (3.2v), the red light starts to flash slowly (1 time per second) until the keyboard is turned off.

- CapsLk indicator  
Uppercase/lowercase ON/OFF, the white indicator light is always ON/OFF, after connection to an Ipad, open Settings - General - Physical Keyboard - Turn off using the caps lock key to switch languages.

- Keyboard enter sleep mode  
The keyboard stops pairing if the user does not operate the keyboard within 3 minutes or when the keyboard is abnormally connected, the backlight and other indicators are all off, and the keyboard enters sleep mode; after pairing and normal use, the keyboard does not operate for 30 seconds, the backlight is off, and the keyboard enters the standby state. If the keyboard is not used for 10 minutes, it enters sleep mode and can be woken up by pressing any key on the keyboard (the touchpad will not wake it up). When the battery power is lower than 15% (3.1-3.5v), the backlight is turned off;

⑦



⑨