



iMouse S50

2.4 GHz Wireless Mini Mouse



Model: iMouse S50

QuickGuide

English

www.adesso.com

①

CONTENTS



iMouse S50



USB Receiver

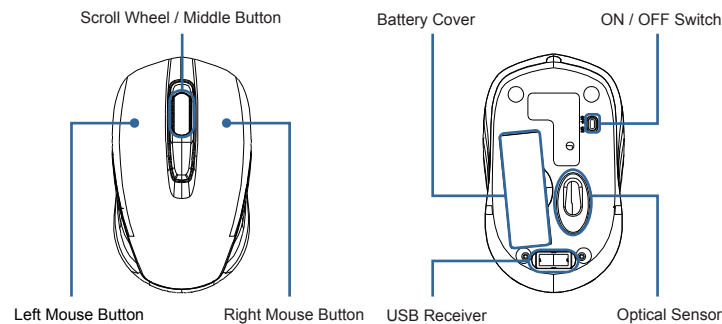


(2) AAA Batteries



Quick Start Guide

DESCRIPTION



④

LIMITED WARRANTY

Adesso® provides a one year limited warranty for all of its products against defects in materials and workmanship.

During this period, Adesso® will repair or replace any product which proves to be defective. However, Adesso® will not warrant any product which has been subject to improper handling, abuse, negligence, improper installation or unauthorized repair. The warranty will not cover products installed with components not approved by Adesso® and products where the sealed assembly trace has been broken.

If you discover a defect, Adesso® will, at its option, repair or replace the product free of charge, provided you return it during the warranty period with freight charges pre-paid to Adesso®. Before returning any product, you must obtain a Return Merchandise Authorization number (RMA). This RMA # must be clearly marked on the outside of the package you are returning for warranty service. Be certain to also include your name, shipping address (no PO Boxes), telephone number, and a copy of the invoice showing proof of purchase in the package.

SUPPORT

We have listed most of our FAQ's (Frequently Asked Questions) at: <http://www.adesso.com/faqs.asp>. Please visit our FAQ Service & Support pages before you contact our E-mail or Telephone Support.

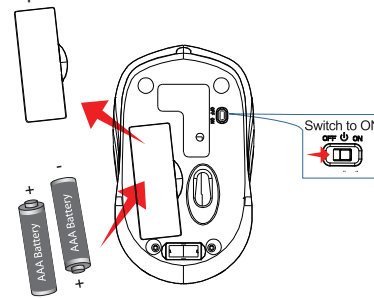
Email Support: If our FAQ's do not help you resolve your issues, please email support@adesso.com

Telephone Support:
Toll Free: (800) 795-6788
9:00AM to 5:00PM PST Monday - Friday

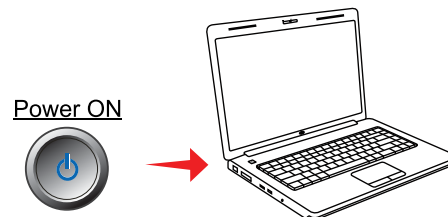
②

INSTALLATION

1. Remove the battery cover and insert (2) AAA batteries into the mouse and turn the power switch to ON.



2. Turn ON your computer and let your computer load completely.



⑤

INTRODUCTION

Experience new levels of productivity with the Adesso® iMouse S50 Wireless Mini Mouse. This advanced wireless mouse offers you up to 30 feet of wireless freedom and eliminates the constraints that wired mice often cause. Its optical sensor tracking method lets you work on most surfaces with better speed and accuracy. In addition, the mouse includes a built-in DPI resolution of 1200 for precise navigation and fast maneuver. Its portability and reliability makes it the perfect peripheral to wherever you go.

SPECIFICATIONS

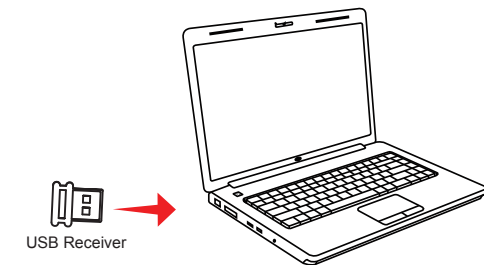
• Tracking Method:	Optical
• Connectivity:	Wireless RF 2.4GHz
• Wire:	Up to 30 ft. (10m)
• Interface:	USB
• Hand Orientation:	Right & Left
• Buttons:	3 (Left & Right Mouse Button, Scroll Wheel/Middle Button)
• Resolution:	1,200 DPI
• Dimensions:	4.0 x 2.4 x 1.4" (101 x 60 x 36mm)
• Weight	2 oz (0.12lbs) (57g)

REQUIREMENTS

- Operating System: Windows® 10/8/7
- An Available USB port

③

3. Insert the USB receiver into your computer's USB port. Your operating system will automatically detect your iMouse S50.



4. Your computer's operating system will automatically detect and connect the device (this device is plug and play, no driver is required). Your mouse is now ready for use.

⑥