



iMouse P40

Air Mouse Wireless Desktop Presenter Mouse



Model: iMouse P40

QuickGuide

English

www.adesso.com

①

LIMITED WARRANTY

Adesso® provides a one year limited warranty for all of its products against defects in materials and workmanship.

During this period, Adesso® will repair or replace any product which proves to be defective. However, Adesso® will not warrant any product which has been subject to improper handling, abuse, negligence, improper installation or unauthorized repair. The warranty will not cover products installed with components not approved by Adesso® and products where the sealed assembly trace has been broken.

If you discover a defect, Adesso® will, at its option, repair or replace the product free of charge, provided you return it during the warranty period with freight charges pre-paid to Adesso®. Before returning any product, you must obtain a Return Merchandise Authorization number (RMA). This RMA # must be clearly marked on the outside of the package you are returning for warranty service. Be certain to also include your name, shipping address (no PO Boxes), telephone number, and a copy of the invoice showing proof of purchase in the package.

SUPPORT

We have listed most of our FAQ's (Frequently Asked Questions) at: <http://www.adesso.com/-faq.asp>. Please visit our FAQ Service & Support pages before you contact our E-mail or Telephone Support.

Email Support: If our FAQ's do not help you resolve your issues, please email support@adesso.com.

Telephone Support:
Toll Free: (800) 795-6788
9:00AM to 5:00PM PST Monday - Friday

②

INTRODUCTION

The Adesso iMouse P40 is a multifunctional wireless mouse presenter. It can operate both as a regular desktop mouse or as a wireless presenter depending on different usage applications. This dual mode design feature provides versatility and convenience by eliminating the need of having both a presenter and a mouse. The built-in motion sensor allows waving the mouse in air and the mouse pointer will move according to the waving motion, enabling you to have computer control from anywhere in the room. It's power laser pointer is bright and easy to see, providing more engagement between you and the audience. Last but not least, its compatibility with multiple different popular softwares for presentation makes it a great presenting peripheral companion.

SPECIFICATIONS

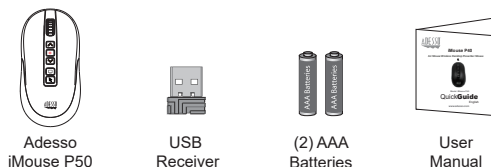
Wireless Technology:	2.4 GHz Wireless Technology
Wireless Range:	Up to 100 feet
Resolutions:	800/1600/2400 DPI
Battery:	AAA*2
Indicators:	Low Battery
Hand Orientation:	Universal (Right & Left)
Dimensions:	4.6" x 2.3" x 1.6" (118 x 60 x 41 mm)
Weight:	0.22 lb (100g)

REQUIREMENTS

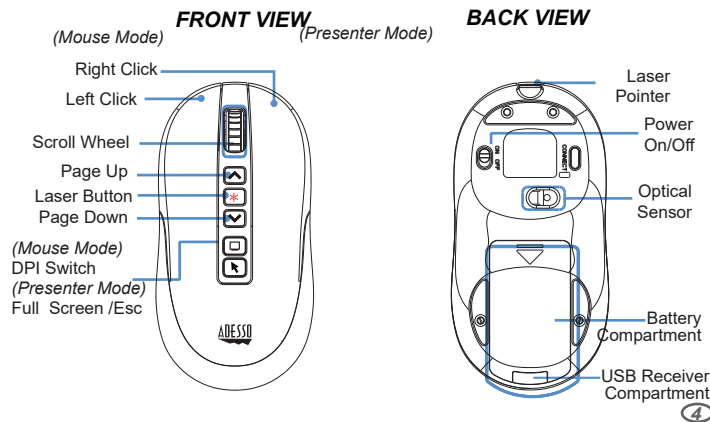
Operating System:	Windows® 11/10/8/7/XP, Mac OS
Connectivity Interface:	An Available USB Port for USB receiver

③

CONTENT



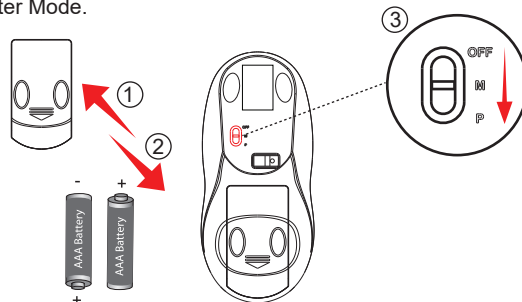
DESCRIPTION



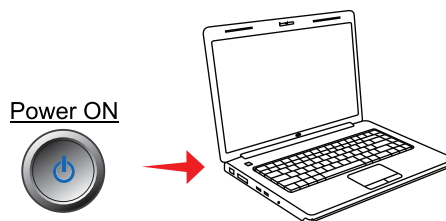
④

HARDWARE INSTALLATION

1. Remove the battery cover and insert (2) AAA batteries into the mouse and turn the power switch to **M** for Mouse Mode or **P** for Presenter Mode.

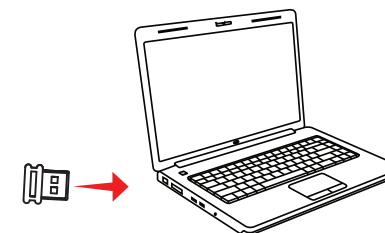


2. Turn ON your computer and let your computer load completely.



⑤

3. Insert the USB receiver into your computer's USB port. Your operating system will automatically detect your iMouse P20.



TROUBLESHOOTING TIPS

- Q:** How to reestablish connection to the wireless receiver?
A: • Unplug the receiver and plug it into a different usb port.
 • Make sure fresh batteries are installed.
 • Turn the device to **M** Mouse Mode.
 • Make sure the device is within 1 feet from the usb receiver and Press and Hold both DPI Switch Button and the Scroll Wheel Button.
 • The Optical Sensor should blink 3 times and the device should be connected.
- Q:** Why Page Up & Down are not working in Presenter Mode?
A: In Presenter Mode, the Scroll Wheel overtakes the function of both Page Up & Down Buttons.

WARNING

Please avoid direct exposure to the eyes and keep away from children and pets as this product is not a toy and can cause serious eye damage.

⑥