



# iMouse P20

## Air Mouse Elite



# QuickGuide

English

www.adesso.com

## Limited Warranty

ADESSO provides one year limited warranty for the quality of all its products in materials and workmanship.

During this period, ADESSO will repair or replace all merchandise, which proved to be defective. However, ADESSO will not warranty any product which has been subjected to improper freight Handling, shipping abuse, neglect or unauthorized repair or installation. The warranty also will not cover products installed with Non-ADESSO components and product with broken sealed and assembly trace. After replacement of RMA, ADESSO reserves the right to request the total cost of the replacement products with broken seals or assembly trace.

If you discover a defect, Adesso will, at its option, repair or replace the product at no charge to you, provided you return it during the warranty period with transportation charges pre-paid to Adesso. You must contact Adesso at support@adesso.com for a Return Merchandise Authorization number (RMA) prior to returning any product. For each product returned for warranty service, please include your name, shipping address (no P.O. Box), telephone number, copy of the bill of sale as proof of purchase and have the package clearly marked with your RMA number.

## SUPPORT

FAQ's: <http://www.adesso.com/faqs>

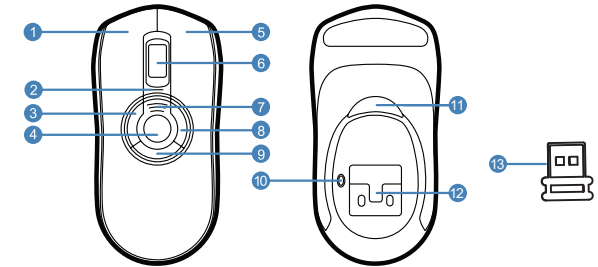
Email Support: [support@adesso.com](mailto:support@adesso.com)

Telephone Support:  
Toll Free: (800) 795-6788  
9:00AM to 5:00PM PST Monday - Friday

## MORE LANGUAGES



## Overview



### A: Mouse Mode

- 1 Left Mouse Button
- 2 Status LED
- 3 Backward Button
- 4 DPI Button
- 5 Right Mouse Button
- 6 Scroll Wheel
- 7 Battery Indication LED's
- 8 Forward Button
- 9 Non-function
- 10 Mouse Connect Button
- 11 Non-function
- 12 Internal lithium-ion battery
- 13 2.4 GHz USB Receiver

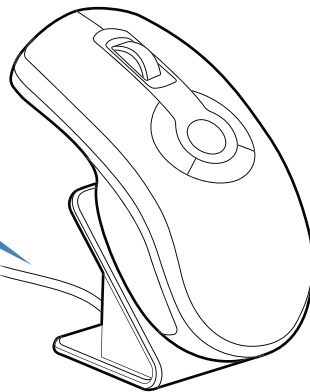
### B: Presenter Mode

- 1 Left Mouse Button
- 2 Status LED
- 3 Page Up
- 4 Gesture Button
- 5 Right Mouse Button
- 6 Scroll Wheel
- 7 Battery Indication LED's
- 8 Page Down
- 9 Full screen/ESC
- 10 Mouse Connect Button
- 11 In-Air Activation Trigger
- 12 Internal lithium-ion battery
- 13 2.4 GHz USB Receiver

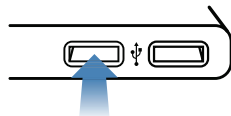
## Getting Started

- 1 Press the mouse connect button to turn on the mouse. The blue LED should flash.

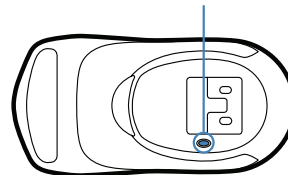
Plug one end of the included USB charging cable into the desktop charger and the other end into an available USB port. Place the mouse on cradle charger and charge for 8 hours. The Battery Indicator LED's will progressively flash while charging. When all three amber LED's are solid the battery is fully charged.



- 2 Insert the USB receiver into an available USB port on your computer.



- 3 Press the connect button on the bottom of the mouse

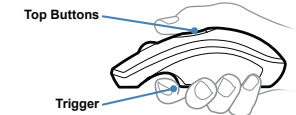


- 4 Download MotionTools - [www.adesso.com/download](http://www.adesso.com/download)

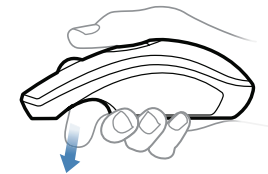
- 5 The computer will automatically detect and configure the Air Mouse.

## In-Air Operation

- 6 Hold the mouse using a comfortable handshake position. Use your index finger to access the in-air activation trigger and your thumb to access the top mouse buttons.



- 7 Tip: Click and hold the in-air activation trigger then move the cursor over a target and release the trigger before clicking. This parks the cursor over the target and allows you to click more accurately.



- 8 Press and hold the in-air activation trigger and move the cursor by flexing only your wrist while keeping your arm and body stationary.



- 9 Double-clicking the in-air activation trigger puts the Air Mouse in motion mode where you can move the cursor without holding the trigger.