



# Cybertablet K10

## 10" x 5.6" Graphic Tablet



# QuickGuide

English

www.adesso.com

## LIMITED WARRANTY

ADESSO provides one year limited warranty for the quality of all its products in materials and workmanship.

During this period, ADESSO will repair or replace all merchandise, which proved to be defective. However, ADESSO will not warranty any product which has been subjected to improper freight Handling, shipping abuse, neglect or unauthorized repair or installation. The warranty also will not cover products installed with Non-ADESSO components and product with broken sealed and assembly trace. After replacement of RMA, ADESSO reserves the right to request the total cost of the replacement products with broken seals or assembly trace.

If you discover a defect, Adesso will, at its option, repair or replace the product at no charge to you, provided you return it during the warranty period with transportation charges pre-paid to Adesso. You must contact Adesso at support@adesso.com for a Return Merchandise Authorization number (RMA) prior to returning any product. For each product returned for warranty service, please include your name, shipping address (no P.O. Box), telephone number, copy of the bill of sale as proof of purchase and have the package clearly marked with your RMA number.

## SUPPORT

FAQ's: <http://www.adesso.com/faqs>

Email Support: [support@adesso.com](mailto:support@adesso.com)

Telephone Support:  
Toll Free: (800) 795-6788  
9:00AM to 5:00PM PST Monday - Friday

## MORE LANGUAGES



2

## INTRODUCTION

The Cybertablet K10 is an advanced graphic tablet that offers both PC and Mac users superior cursor control, greater productivity and higher efficiency. Perfect for art, business, presentations, and projects. The Cybertablet features 8192 levels of pressure sensitivity to imitate the subtleties of a brush stroke and other writing tools, while its multiple programmable hot keys provide various shortcuts to commonly used computer tasks. Plus, the drawing area allows increased precision and detail. This high quality graphic-tablet is ideal for document annotation, free hand illustrations, graphic design, whiteboard presentations, or generally more precise cursor control.

### Specifications:

Technology	Passive EMR
Pen	Passive Pen
Pen Buttons	2
Pressure Sensitivity	8192 Levels
Active Area Size	10 x 5.6 Inch
Resolution	5080 LPI
RPS	Max >= 200
Accuracy	+ - 0.01 inch (center area)
Hovering	10mm
Connector	USB Type C
Dial	1
Hotkeys	6
Light	LED x 1
Working Voltage	Wired, DC: 5.0V
Color	Black
Material	Plastic
Dimension	12.20 x 8.93 x 0.67 Inch (L 310 x W 266.9 x H 17mm)

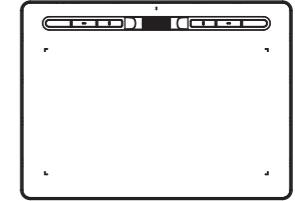
### Requirements:

Operating System	WINDOWS 10/8/7/Vista/XP Mac OS 10.4 above
Connectivity Interface	USB Port

3

## UNPACKING

Before use, make sure the following items are included in the package. If anything is missing, contact the retailer where you purchased the product.

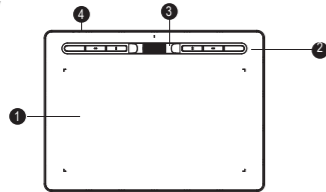


- 1 CYBERTABLET K10 Graphic Tablet
- 2 Passive Stylus Pen
- 3 USB Type C Cable
- 4 Quick Start Guide
- 5 Pen Holder

4

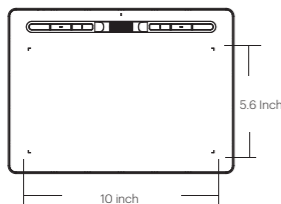
## DESCRIPTION

### 1. Product Overview



- 1 Working Area
- 2 Hotkeys
- 3 Scroll Wheel
- 4 USB TYPE C PORT

### 2. Active Area



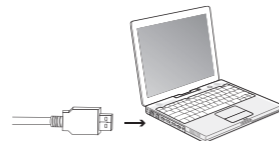
5

## INSTALLATION

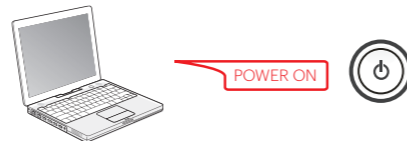
1. Make sure your computer is turned on and its operating system is loaded completely before plugging in the CYBERTABLET.



2. Plug the USB Type C cord into the CYBERTABLET, plug the USB cord into your computer.



3. Your operating system will detect the CYBERTABLET automatically. Proceed to Driver Setup.



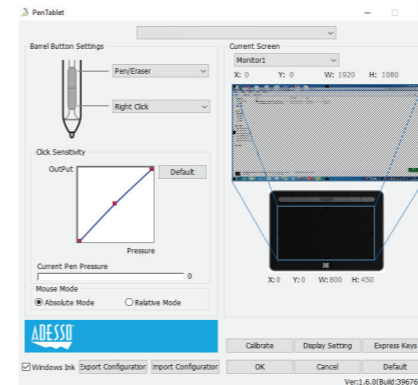
6

## DRIVER SETUP

1. Make sure your computer is turned on and its operating system is loaded completely before plugging in the CYBERTABLET.

2. Please download the CYBERTABLET latest driver from the support section of our website, [adesso.com](http://adesso.com), extract the installation file.

3. After a successful installation, the driver's icon will appear in your system tray and on your desktop. Double click the "Pentablet" icon on your desktop to launch the driver UI.



7

## SOFTWARE FUNCTIONS

### 1. Barrel Button Settings

Make sure your computer is turned on and its operating system is loaded completely before plugging in the CYBERTABLET.

### 2. Click Sensitivity & Current Pen Pressure

You can adjust pen pressure to "Output" or "Press" sensitivity on here. Current Pen Pressure shows the current pressure level being exerted on your tablet and can be used to test pen pressure.

### 3. Mouse Mode

Absolute Mode: Standard tablet mode; Each point of the tablet's work area corresponds to absolute point on your computer display.  
Relative Mode: Mouse mode; The tablet's work area does not correspond to absolute points on your computer display and your pen works as standard mouse.

### 4. Windows Ink

Windows Ink capability can be toggled on the off here. Enabling this will allow support for Windows Ink and applications that run using Windows Ink.

### 5. Calibration

The Calibration tab allows you to setup calibration for your tablet.

### 6. Display Setting

- 1). Color Temperature: Use to adjust the CYBERTABLET's color balance.
- 2). User: Use to adjust red, green and blue color levels on the display. Brightness and contrast can also be adjusted here.
- 3). Rotate: You may rotate the CYBERTABLET from 0/90/180/270 degree.

### 7. Express Keys

Use the Express Keys Setting to set custom keystrokes for your Shortcut Keys. You can have 6 Custom Settings for all the Shortcut Keys.

8