

ADESSO®

CyberTablet W9

Adesso 8" x 5" Wireless WideScreen Graphic Tablet



Model: CyberTablet™ W9

QuickGuide

English

www.adesso.com

DESCRIPTION



LIMITED WARRANTY

ADESSO provides one year limited warranty for the quality of all its products in materials and workmanship.

During this period, ADESSO will repair or replace all merchandise, which proved to be defective. However, ADESSO will not warranty any product which has been subjected to improper freight handling, shipping abuse, neglect or unauthorized repair or installation. The warranty also will not cover products installed with Non-ADESSO components and product with broken sealed and assembly trace. After replacement of RMA, ADESSO reserves the right to request the total cost of the replacement products with broken seals or assembly trace.

If you discover a defect, Adesso will, at its option, repair or replace the product at no charge to you, provided you return it during the warranty period with transportation charges pre-paid to Adesso. You must contact Adesso at support@adesso.com for a Return Merchandise Authorization number (RMA) prior to returning any product. For each product returned for warranty service, please include your name, shipping address (no P.O. Box), telephone number, copy of the bill of sale as proof of purchase and have the package clearly marked with your RMA number.

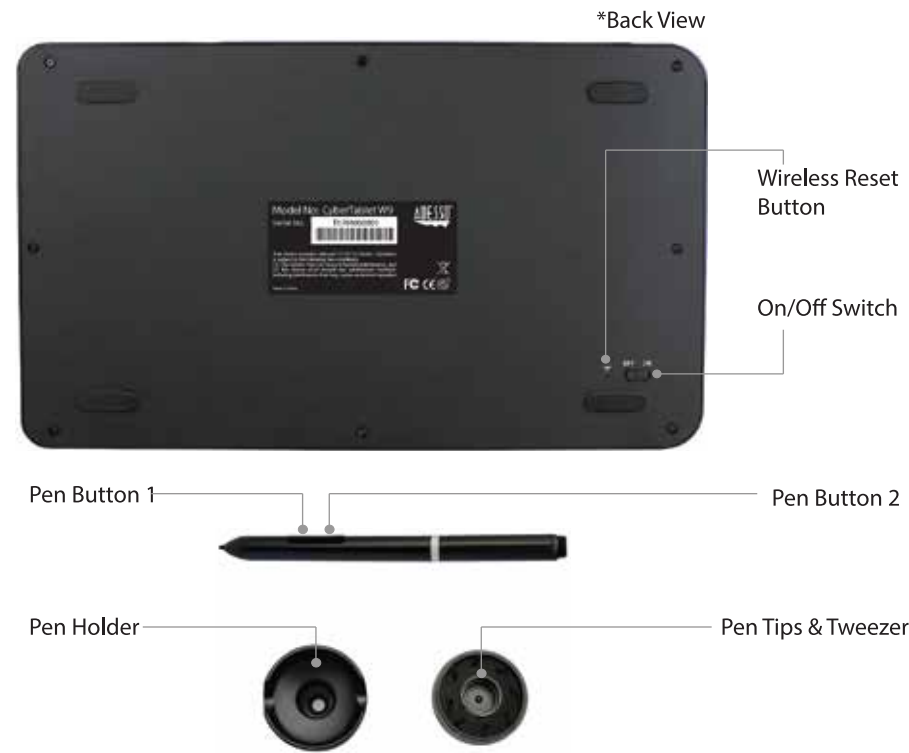
SUPPORT

We have listed most of our FAQ's (Frequently Asked Questions) at: <http://www.adesso.com/faqs.asp>. Please visit our FAQ Service & Support pages before you contact our E-mail or Telephone Support.

Email Support: If our FAQ's do not help you resolve your issues, please email support@adesso.com

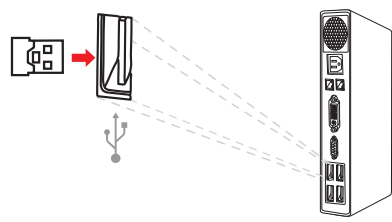
Telephone Support:
Toll Free: (800) 795-6788
9:00AM to 5:00PM PST Monday - Friday

DESCRIPTION

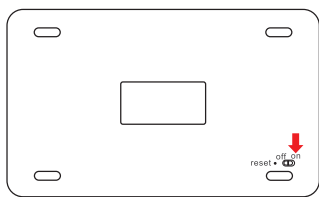


WIRELESS INSTALLATION

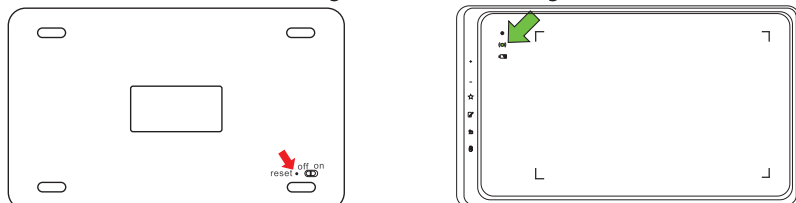
1. Insert the wireless usb receiver into available usb port on your computer.



2. Turn on the tablet from the On/Off Switch.



3. Press the wireless reset button by using the included pin or other narrow objects. Continue to do so until the wireless light indicator remains green.



DRIVER INSTALLATION

FOR WINDOWS

1. Insert the CyberTablet W9 Driver CD into your computer's CD-ROM drive for installation. If the software installer menu does not automatically run, please double click on your CD drive's icon and click on the "install.exe" icon and follow the prompts to install the CyberTablet W9 driver.



2. Click the "Windows Driver" button and follow the on screen procedure to complete installation. After the driver is installed, click OK and restart your computer.



INTRODUCTION

With many of its new convenient features, the Adesso CyberTablet W9 offers its users to create their artworks with ease. The 2.4GHz wireless technology and battery free pen help eliminating the need of wires during usage periods. Users will never have to worry their drawing pen running out of power in the middle of their work. Even when the tablet runs out of power, one can continue using the tablet because it has both wired and wireless operation modes. Users can also create their work with high precision and accuracy because the tablet has high resolution of 5080 lines per inch and 2048 levels of pressure sensitivity. The 8" x 5" working area also emulates to your wide screen monitor size ratio which makes the transition of the pen movement on the tablet and the cursor movement on your monitor as smooth as possible.

SPECIFICATIONS

- Selectable Writing Area: 8" x 5" Widescreen
- Hardware Resolution: 5080 LPI (lines per inch)
- Report Rate: USB: 250 RPS (Report Rate per second)
2.4GHz Wireless: 150 RPS
- Pen Pressure: 2048 levels of sensitivity
- Accuracy: ±0.01 in.
- Working Distance: 10 meters.
- Power Voltage: USB (5V), Wireless (3.7V)
- Power Consumption: < 0.5 Watts
- Built-in Battery: 780 mAh Lithium Battery
- LED indicator: White, Green, and Blue LED
- Interface: USB & Wireless 2.4 GHz with ISM and FHSS Technology
- USB cable length: 5 ft. (1.5 m)
- Dimension: 12" x 7" x 0.4" (300 x 180 x 10 mm)
- Weight: 440g
- Certification: FCC, CE

REQUIREMENTS

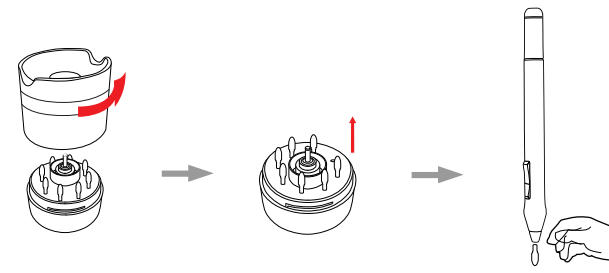
- Operating System: Windows® 10, 8.1, 8, 7
- Mac® OS X 10.7 and higher

CONNECTIVITY

- Interface: USB Receiver (wireless mode) & USB Cable (Wired mode)

CHANGING THE PEN TIP

- Grab the Pen Holder and twist it about 75 degrees counter clockwise. This will remove the top portion of the pen holder and you will then access the additional pen tips and tweezers as shown.
- Remove the tweezers located in the middle of the compartment and take out a pen tip so you can be ready to replace the worn tip in the pen. With the tweezers, simply pull out the worn pen tip and insert the new pen tip to the pen.



Storing the Digital Pen properly

It is recommended to place the pen in a pen holder or store it with the pen tip pointing downward, or place it horizontally with the pen tip free of any other objects.

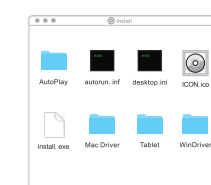
DRIVER INSTALLATION

FOR MAC OSX

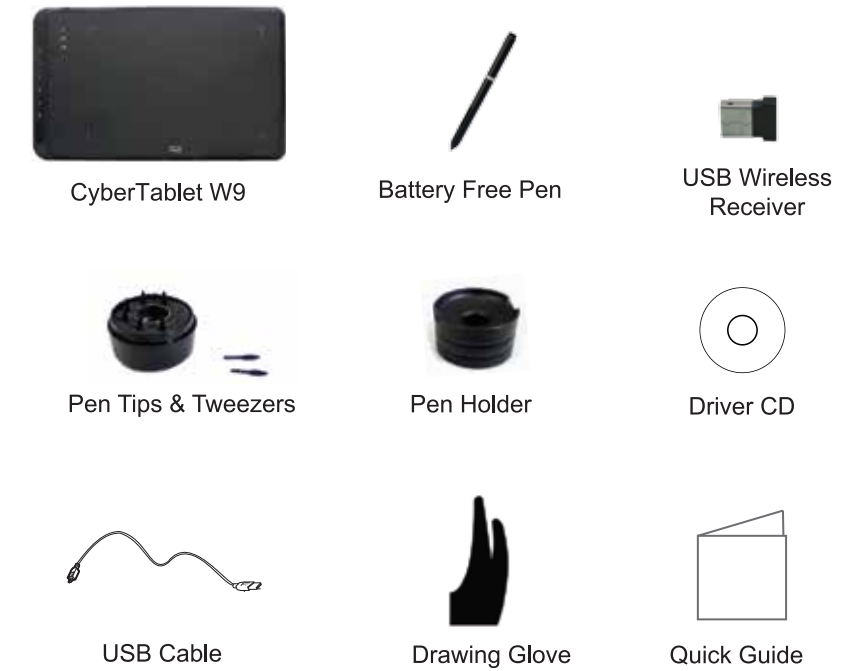
1. Insert the CyberTablet W9 Driver CD into your computer's CD-ROM drive for installation. If the software installer menu does not automatically run, please double click on your "Install CD Icon on your desktop and click on the "Mac Driver" folder, where the driver is located. Double click on that and follow the prompts to install the CyberTablet W9 driver on your Mac computer.



2. Click the "Mac Driver" button and follow the on screen procedure to complete installation. After the driver is installed, click OK and restart your computer. The driver itself will be located in your applications folder named "Touch Tablet".

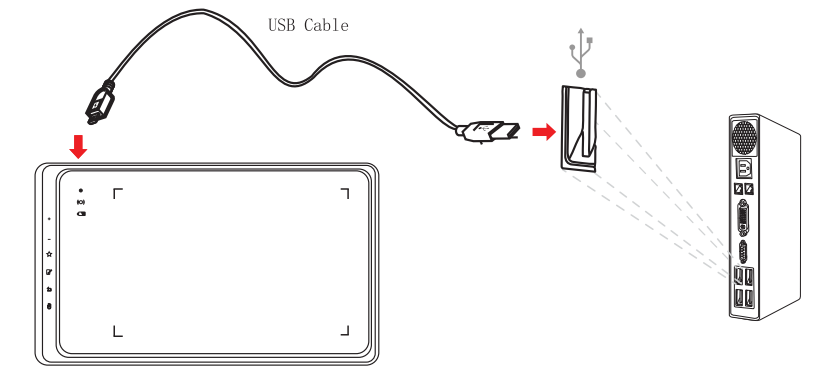


PACKAGE CONTENTS

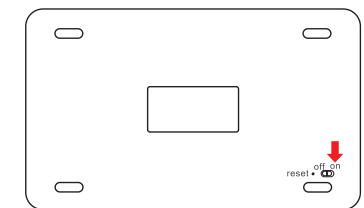


WIRED INSTALLATION

1. Remove the micro usb rubber cover and connect the CyberTablet W9 to your computer's USB port.



2. Turn on the tablet from the On/Off Switch.



NOTE:

- If you have used Graphic Tablets in the past, make sure you completely remove their drivers and restart your system before installing the CyberTablet W9 driver. The driver is needed for advanced controls and functions, however, you can still use the CyberTablet W9 without the driver and simply use as a navigating device without additional tablet or inking features.
- For the complete and detailed User Manual on the driver settings for the pen and tablet, please download from the link below. This will answer all your questions in regards to pen pressure, customizing the pen buttons, monitor calibration and navigating through the driver's menu. http://www.adesso.com/productmanuals/CybertabletW9_User_Manual.zip
- Status Light:**
Blinking - Pen is not touching but in range of the Working Surface Area
Solid - Pen is in contact with the Working Surface Area
Off - Pen is not detected
- Wireless Light:**
Green - Wireless mode ON
Off - Wireless mode OFF
- Battery Light:**
Blue - Tablet is charging
Green - Tablet is fully Charged
Red - Tablet is low on battery power

SOFTWARE:

1. Included is an index card with a link to download the Art Rage Lite software. Please register at <https://members.artrage.com/> and refer to this link in regards to registering your copy of Art Rage Lite with included serial number- <https://www.artrage.com/faqs/register-artrage/>