



Point of Sales Vaccum Fluorescent Pole Display



Model: APD-200

QuickGuide

English

www.adesso.com

①

LIMITED WARRANTY

Adesso® provides a one year limited warranty for all of its products against defects in materials and workmanship.

During this period, Adesso® will repair or replace any product which proves to be defective. However, Adesso® will not warrant any product which has been subject to improper handling, abuse, negligence, improper installation or unauthorized repair. The warranty will not cover products installed with components not approved by Adesso® and products where the sealed assembly trace has been broken.

If you discover a defect, Adesso® will, at its option, repair or replace the product free of charge, provided you return it during the warranty period with freight charges pre-paid to Adesso®. Before returning any product, you must obtain a Return Merchandise Authorization number (RMA). This RMA # must be clearly marked on the outside of the package you are returning for warranty service. Be certain to also include your name, shipping address (no PO Boxes), telephone number, and a copy of the invoice showing proof of purchase in the package.

SUPPORT

We have listed most of our FAQ's (Frequently Asked Questions) at: <http://www.adesso.com/faqs.asp>. Please visit our FAQ Service & Support pages before you contact our E-mail or Telephone Support.

Email Support:

If our FAQ's do not help you resolve your issues, please email support@adesso.com

Telephone Support:

Toll Free: (800) 795-6788
9:00AM to 5:00PM PST Monday - Friday

②

INTRODUCTION:

The Adesso APD-200 customer pole display uses a Vacuum Fluorescent Display (VFD) tube to present bright and easy to read characters. It has two pole sections allowing four different displaying heights and an adjustable multi-angle display head providing the flexibility to tailor displaying angles to different applications. The easy to read display contains a 5 x 7 dot matrix character font and can be adjusted and customized to your viewing preference for faster productivity. One can simply adjust the display head quickly and conveniently by tilting the display viewing angles up to 45° and by rotating it horizontally up to 360°. Finally, the Adesso APD-200 offers a variety of command modes including Epson, Aedex, Emox, Ultimate etc...supporting up to 11 different modes, over 15 different languages, and displaying 96 alphanumeric messages.

SPECIFICATIONS:

| | |
|---------------------------|---------------------------------------------------------------------------|
| Display Method: | Vacuum Fluorescent Display (Blue-Green) |
| Number of Characters: | 40 (20 x 2 lines) |
| Brightness: | 700 cd /m2 |
| Panel Dimensions: | 8.0" (W) x 1.6"(L) x 2.6" (H) (203mm x 66 mm x 41mm) |
| Base Dimensions: | 4.5" (W) x 7.25"(L) x 1.1" (H) (114mm x 185 mm x 28mm) |
| Pole Extender Dimensions: | 6.0"(L) & 1.3"(Diameter). (18mm(L) & 33mm(Diameter)) |
| Maximum Total Height: | 8" to 18.5" (200mm to 467mm) |
| Viewing Angle: | Tilting up to 45°. 360° horizontal rotation |
| Weight : | Approx. 0.9 kg (2lbs) |
| Command Modes: | ADM787, AEDEX, CD5220, DSP800, ESCPOS, ICD2002, NCR, PD6000, UTC_E, UTC_S |

Language Support: English (US & UK), French, German, Danish, Swedish, Italian, Spanish, Japanese, Norwegian, Bosnian, Croatian, Czech, Hungarian, Polish, Romanian, Czechoslovakian, Slovene, Slovenski, Portuguese, Arabic, Persian, Greek, Turkish, Estonian, Lithuania, Latvian, Bulgarian, Serbian, Macedonian & Mid-to-Eastern Europe Latin Languages.

Reliability (MTBF): 30,000 hours
Baud Rate : Direct connection 9600 or 19,200 bps
Power Consumption: 5 VDC @ 2.5W
Safety Certifications: FCC; CE

REQUIREMENT:

Operating System: Windows® XP / 7 / 8 / 10, OPOS Systems
Connectivity Interface: USB & Serial (RS-232)

③

DESCRIPTION



CONTENTS



④

ASSEMBLY INSTRUCTIONS

1. Follow figure to complete the assembly and insert RJ12 cable into the RJ 12 port on the bottom back of the base shown below.



*Note: additional pole extender can be included if a higher height is desired.

⑤

WIRE INSTALLATION

For USB Connection ONLY

Insert usb cable into the usb port of the base and insert the other end into the usb port of your system as shown below.

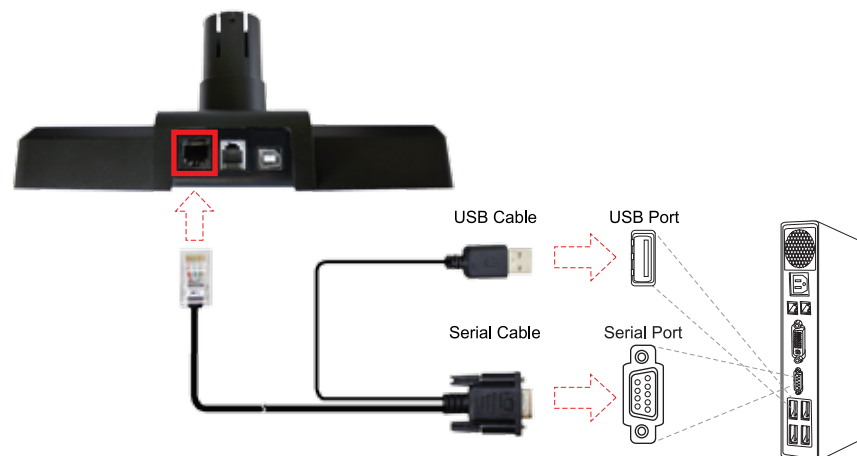


⑥

WIRE INSTALLATION

For SERIAL Connection ONLY

Insert cable into the RJ45 port of the base. Then, insert serial cable into the serial port and usb cable into the usb port of your system as shown below. (Note: usb is for power)



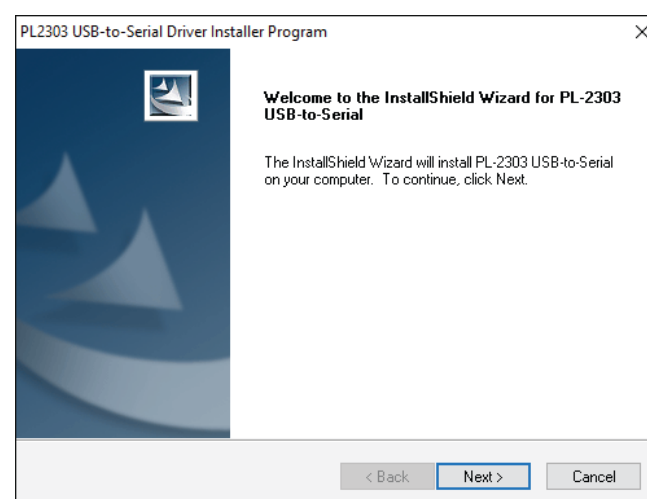
⑦

DRIVER INSTALLATION

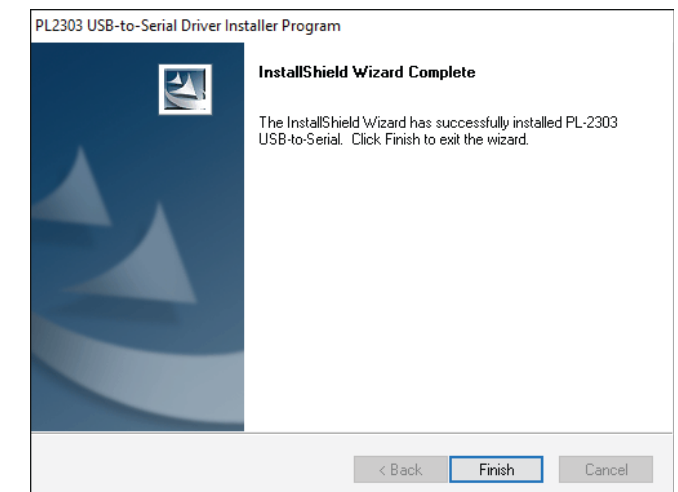
The below steps only applies to USB connection. If you are using SERIAL connection, the installation process is complete.

FOR USB USERS:

1. Insert the CD to install the USB-to-Serial Driver. Follow the on screen instruction. Once installed, your device is ready to use.



⑧



NOTE:

1. Serial connection is driverless and the default baud rate is 9,600. If you need to make advanced changes in the configuration of the pole display for specific applications, the utility driver is located in the installation CD or can be downloaded here:

http://www.adesso.com/download/driver/APD_100&200.zip

⑨