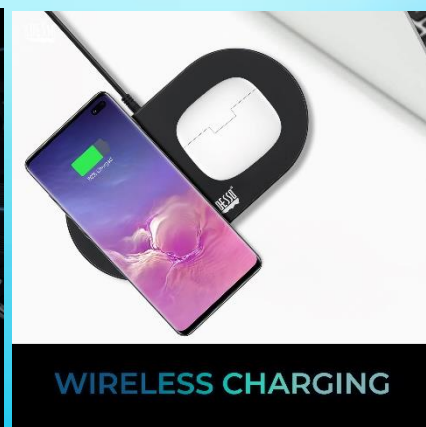




# **Headset/Earbuds/Speakers New Arrival (2025)**



Connectivity:	Bluetooth
Charging:	USB-C
Driver:	10 mm
Music Playback:	6-7 hours
Wireless Range:	10 meters
Control Method:	Touch
Batteries:	30mAh/charging case 200mAh
Features:	Lightweight + form-fitting, deep bass with noise isolation
Case Dimensions:	2.36"x 1"x 2.08" ( 60 x 26 x 53 mm)
Weight:	37g



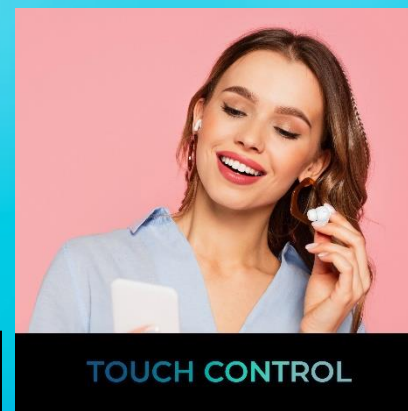


## Xtream T2

ANC + ENC Earbuds With Wireless Charging Case



Connectivity:	Bluetooth
Charging:	USB-C
Driver:	10 mm
Music Playback:	ANC o 7 hours / 6 hours
Wireless Range:	10 meters
Control Method:	Touch
Batteries:	30mAh/charging case 200mAh
Features:	Lightweight + form-fitting, deep bass with noise isolation
Case Dimensions:	2.36"x 1"x 2.08" ( 60 x 26 x 53 mm)
Weight:	37g



# Xtream T3

True Wireless Stereo Earbuds With Touch Controlled Case



Connectivity:	Bluetooth
Charging:	USB-C
Driver:	10 mm
Music Playback:	x4
Wireless Range:	7 - 8 hours
Control Method:	10 meters (33ft)
Batteries:	40mAh /Charging Case 400mAh Supported
Features:	Capacitive Touch, Lightweight Earbuds
Case Dimensions:	2.44"x 0.94"x 1.93" ( 62 x 24 x 49 mm)
Weight:	0.12 lbs (55g)

Bluetooth

**TOUCH SCREEN CONTROL**

Bluetooth

**BLUETOOTH WIRELESS CONNECTIVITY**

STRONG BASS PERFORMANCE COMES FROM 14.2 MM DYNAMIC SPEAKERS

Support: HSP & A2DP

**HI-FI STEREO SOUND**

**TOUCH CONTROL**

**7-8 HOUR TALK & LISTEN TIME**

Works with:

Smart Phone Notebook Computer MAC OS

**MULTI-PLATFORM COMPATIBILITY**



# Xtream T4

## Open-Ear Bluetooth Earbuds with Charging Case



Connectivity:	Bluetooth
Charging:	USB-C
Driver:	10 mm
Mic	x4
Music Playback:	12 hours
Wireless Range:	10 meters (33ft)
Control Method:	Earbuds 30mAh /Charging Case 300mAh
Batteries:	Capacitive Touch
Features:	Lightweight
Case Dimensions:	4.17"x 2.44"x 1" (106 x 62 x26mm)
Weight:	0.2 lbs (92g)





# Xtream T5

Open-Ear Sport Bluetooth Water Resistant Earbuds



Connectivity:	Bluetooth
Charging:	USB-C
Driver:	15 mm
Water Resistant:	IP65
Music Playback:	5 hours
Wireless Range:	10 meters (33ft)
Batteries:	Earbuds 40mAh
Control Method:	Capacitive Touch
Features:	Lightweight
Case Dimensions:	4.17"x 2.44"x 1" (106 x 62 x26mm)
Weight:	0.2 lbs (92g)

Open-Ear Design for Secure Fit

**ERGONOMIC OPEN EAR DESIGN**

Works with:

**MULTI-PLATFORM COMPATIBILITY**

**BLUETOOTH WIRELESS CONNECTIVITY**

Upto **5 HOURS** Playtime

Additional **40 HOURS** With the Case

**5 HOUR TALK & LISTEN TIME**

**Experience True HiFi Sound**  
Feel Every Beat, Just Like Being There

DT Dynamic EQ Technology

14.2mm Precision Hi-Fi Driver

Faster Speed, Less Lag

**WATER RESISTANT**



# Xtream T6

## Open-Ear Sport Bluetooth Earbuds with Touchscreen Controls



Connectivity:	Bluetooth
Charging:	USB-C
Driver:	14 mm
Music Playback:	12 hours
Wireless Range:	10 meters (33ft)
Batteries:	Earbuds 70mAh
Control Method:	Capacitive Touch, Touch Screen
Features:	Lightweight
Case Dimensions:	4.17"x 2.44"x 1" (106 x 62 x26mm)
Weight:	0.2 lbs (92g)



Ultra Light Soft Silicone Ergonomic Ear Hook Touch Control

**ERGONOMIC OPEN EAR DESIGN**



**TOUCH SCREEN CONTROL**



**MULTI-PLATFORM COMPATIBILITY**



**BLUETOOTH WIRELESS CONNECTIVITY**



**12 HOUR TALK & LISTEN TIME**



**Experience True HIFI Sound**  
Feel Every Beat, Just Like Being There

DT Dynamic EQ Technology  
14.2mm Precision Hi-Fi Driver  
Faster Speed, Less Lag

### Xtream T7

Wireless Real-time Translation Earbuds



#### 【Real-time translation in 36 languages】

Chinese, English, Japanese, Korean, French, Spanish, German, Arabic, Russian, Thai, Vietnamese, Hindi, Italian, Catalan, Croatian, Czech, Danish, Dutch, Finnish, Greek, Hebrew, Hungarian, Indonesian, Malay, Polish, Portuguese, Romanian, Slovak, Swedish, Turkish, Ukrainian...

#### 【ANC - Active Noise Cancellation】

3 layer active noise cancellation. 1. Outward-facing microphone detects external sounds and counter with equal anti-noise to reduce the environmental noise up to more than 25dB. 2. Inward-facing microphone listens inside ear canal to pick up internal sounds and produce anti-noise again to twice cancel the left noise. 3. Ear caps prevent 90% noise going to ear canal.

#### 【Transparency Mode】

You can hear what you want to hear, which lets outside sound in so you can hear and interact with the world around you. You can clearly hear the announcement of the airline or subway and what is saying around you without taking off the headphones.

#### 【ENC with Dual Mic Call Noise Reduction】

Dual microphone built-in equipped the latest moving-coil Horn loudspeaker with bigger dynamic driver. Noise Reduction can make others hear you very clearly while phone calls, providing you with more realistic call sound and reproducing your music vividly.

#### 【Stereo Sound Quality】

Earbuds' 13mm diameter speaker presents a powerful and wide sound range, which makes the treble full of dynamics, and the bass powerful. Adopt advanced Bluetooth chip makes the sound played by the earphones much more beautiful and pleasant, suitable for sports or home work.

#### 【40 hours durable long time playback】

Enjoy 7 hours of playtime, plus another 33 in the charging case.





### Xtream T8

Real-time Translation Earbuds With Touch Controlled Case



**【Real-time translation in 36 languages】**

Chinese, English, Japanese, Korean, French, Spanish, German, Arabic, Russian, Thai, Vietnamese, Hindi, Italian, Catalan, Croatian, Czech, Danish, Dutch, Finnish, Greek, Hebrew, Hungarian, Indonesian, Malay, Polish, Portuguese, Romanian, Slovak, Swedish, Turkish, Ukrainian...

**【Convenient Smart LCD Charging Case】**

The touchscreen display on your Smart Charging Case gives you full control of your sound on any devices - laptop, TV, smartphones, or tablets without needing to access the App on your smartphone.

**【ANC - Active Noise Cancellation】**

3 layer active noise cancellation. 1. Outward-facing microphone detects external sounds and counter with equal anti-noise to reduce the environmental noise up to more than 25dB. 2. Inward-facing microphone listens inside ear canal to pick up internal sounds and produce anti-noise again to twice cancel the left noise. 3. Ear caps prevent 90% noise going to ear canal.

**【Transparency Mode】**

You can hear what you want to hear, which lets outside sound in so you can hear and interact with the world around you. You can clearly hear the announcement of the airline or subway and what is saying around you without taking off the headphones.

**【ENC with Dual Mic Call Noise Reduction】**

Dual microphone built-in equipped the latest moving-coil Horn loudspeaker with bigger dynamic driver. Noise Reduction can make others hear you very clearly while phone calls, providing you with more realistic call sound and reproducing your music vividly.

**【Stereo Sound Quality】**

Earbuds' 13mm diameter speaker presents a powerful and wide sound range, which makes the treble full of dynamics, and the bass powerful. Adopt advanced Bluetooth chip makes the sound played by the earphones much more beautiful and pleasant, suitable for sports or home work.

Bluetooth

**TOUCH SCREEN CONTROL**

Bluetooth

**BLUETOOTH WIRELESS CONNECTIVITY**

40 hours of playtime with ANC off, 33 hours with ANC on. 7 hours of playtime with ANC off, 3 hours with ANC on in the charging case.

**HI-FI STEREO SOUND**

**TOUCH CONTROL**

**7-8 HOUR TALK & LISTEN TIME**

Works with: iPhone, Windows, Computer, Android

**MULTI-PLATFORM COMPATIBILITY**

### Xtream T9

Open-Ear Sport Bluetooth Real-time Translation Earbuds



**【Real-time translation in 36 languages】**

Chinese, English, Japanese, Korean, French, Spanish, German, Arabic, Russian, Thai, Vietnamese, Hindi, Italian, Catalan, Croatian, Czech, Danish, Dutch, Finnish, Greek, Hebrew, Hungarian, Indonesian, Malay, Polish, Portuguese, Romanian, Slovak, Swedish, Turkish, Ukrainian...

**【Open Ear Design For Multiple Scenarios】**

The Open Ear Design is engineered for both comfort and safety, offering a breathable and open fit. From video calls to listening to your favorite tunes, these headphones are versatile and cater to multiple scenarios, making them an ideal companion for your daily life.

**【Ultra Lightweight and Compatible for Ear】**

The surface and Angle of the earbuds in-ear part have been polished and refined repeatedly to achieve a balance between beauty and comfort and make it comfortable to wear.

**【Stereo Sound Quality】**

Earbuds' 13mm diameter speaker presents a powerful and wide sound range, which makes the treble full of dynamics, and the bass powerful. Adopt advanced Bluetooth chip makes the sound played by the earphones much more beautiful and pleasant, suitable for sports or home work.

**【36 hours durable long time playback】**

Enjoy 6 hours of playtime, plus another 30 in the charging case.

Open-Ear Design for Secure Fit

**ERGONOMIC OPEN EAR DESIGN**

Works with:

**MULTI-PLATFORM COMPATIBILITY**

**BLUETOOTH WIRELESS CONNECTIVITY**

Upto **5 HOURS** Playtime  
Additional **40 HOURS** With the Case

**5 HOUR TALK & LISTEN TIME**

**Experience True HiFi Sound**  
Feel Every Beat, Just Like Being There

DT Dynamic EQ Technology  
14.2mm Precision Hi-Fi Driver  
Faster Speed, Less Lag

**WATER RESISTANT**

### Xtream T10

Open-Ear Sport Bluetooth Real-time Translation Earbuds



#### 【Real-time translation in 36 languages】

Chinese, English, Japanese, Korean, French, Spanish, German, Arabic, Russian, Thai, Vietnamese, Hindi, Italian, Catalan, Croatian, Czech, Danish, Dutch, Finnish, Greek, Hebrew, Hungarian, Indonesian, Malay, Polish, Portuguese, Romanian, Slovak, Swedish, Turkish, Ukrainian...

#### 【Convenient Smart LCD Charging Case】

The touchscreen display on your Smart Charging Case gives you full control of your sound on any devices - laptop, TV, smartphones, or tablets without needing to access the App on your smartphone.

#### 【Open Ear Design For Multiple Scenarios】

The Open Ear Design is engineered for both comfort and safety, offering a breathable and open fit. From video calls to listening to your favorite tunes, these headphones are versatile and cater to multiple scenarios, making them an ideal companion for your daily life.

#### 【Ultra Lightweight and Compatible for Ear】

The surface and Angle of the earbuds in-ear part have been polished and refined repeatedly to achieve a balance between beauty and comfort and make it comfortable to wear.

#### 【Stereo Sound Quality】

Earbuds' 13mm diameter speaker presents a powerful and wide sound range, which makes the treble full of dynamics, and the bass powerful. Adopt advanced Bluetooth chip makes the sound played by the earphones much more beautiful and pleasant, suitable for sports or home work.

#### 【42 hours durable long time playback】

Enjoy 7 hours of playtime, plus another 35 in the charging case.

Open-Ear Design for Secure Fit

**ERGONOMIC OPEN EAR DESIGN**

Works with:

**MULTI-PLATFORM COMPATIBILITY**

Bluetooth

**BLUETOOTH WIRELESS CONNECTIVITY**

Up to **5 HOURS** Playtime

Additional **40 HOURS** With the Case

**5 HOUR TALK & LISTEN TIME**

Experience True **HIFI** Sound

Feel Every Beat, Just Like Being There

DT Dynamic EQ Technology

14.2mm Precision Hi-Fi Driver

Faster Speed, Less Lag

**WATER RESISTANT**



The Adesso Xtream P4 headset, your ultimate communication companion. This sleek and versatile headset seamlessly combines advanced features for exceptional audio clarity and effortless call management. The built-in microphone, enhanced with CoPilot shortcut, a enter and mute buttons and functionality, ensures crystal clear conversations in any environment.



**DESIGNATED  
PUSH-TO-TALK  
BUTTON**



**COPILOT AI SHORTCUT**



**ERGONOMIC &  
COMFORTABLE FIT**



**FLEXIBLE &  
ADJUSTABLE MIC**



**COMPACT &  
LIGHTWEIGHT**



**3 IN 1 CONNECTIVITY**



The Adesso Xtream P4-TAA headset, your ultimate communication companion. This sleek and versatile headset seamlessly combines advanced features for exceptional audio clarity and effortless call management. The built-in microphone, enhanced with a mute button and answer/end call functionality, ensures crystalclear conversations in any environment. With integrated volume up and down buttons, adjusting audio levels becomes intuitive and convenient.

**TAA COMPLIANT**

DESIGNATED MUTE BUTTON

**TAA COMPLIANT**

- RED LED INDICATES MUTE MIC
- BLUE LED INDICATES ACTIVE CALL
- MUTE BUTTON
- VOLUME UP
- VOLUME DOWN
- CALL CONTROL ANSWER / END

CALL CONTROLLER WITH LED INDICATORS

**TAA COMPLIANT**

- FLEXIBLE HEADBAND
- NOISE ISOLATING EAR CUSHIONS

ERGONOMIC & CONFORTABLE FIT

**TAA COMPLIANT**

FLEXIBLE & ADJUSTABLE MIC

**TAA COMPLIANT**

Works With **DESKTOP & MOBILE**

COMPACT & LIGHTWEIGHT

**TAA COMPLIANT**

**USB TYPE-C** CONNECTIVITY



# Xtream P7-TAA

3 in 1 TAA Wired Headset with Mute, Volume +/-, Answer/End Call Controls, USB C with Type C to A/3.5mm Adaptors



Connection:	Bluetooth 5.3 + USB-C
Wireless Range:	> 32 feet (10m)
Unit Driver:	High quality 40mm speaker
Frequency:	20Hz-20KHz
Sensitivity:	110±3dB (at 1KHz)
Impedance:	32ohm ± 15%
Battery:	3.7V/400mAh
Music Playing Time:	40 Hrs
Case Dimensions:	155 x 55 x170 MM
Net Weight:	0.3 lbs (140g)



DESIGNATED  
PUSH-TO-TALK BUTTON



CALLS & VOLUME CONTROL



ERGONOMIC &  
COMFORTABLE FIT



FLEXIBLE &  
ADJUSTABLE MIC



COMPACT &  
LIGHTWEIGHT



3 IN 1 CONNECTIVITY

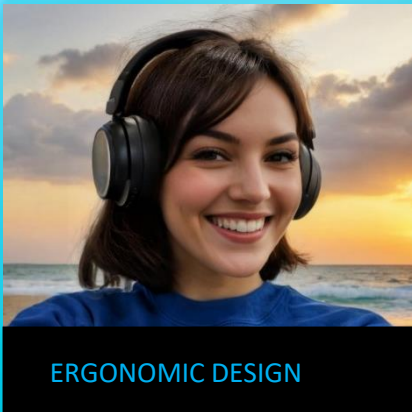


# Xtream P800

Bluetooth Headphone with Active Noise Cancellation and Built-in Microphone



Connection:	Bluetooth 5.3+ 3.5mm plug
Wireless Range:	> 32 feet (10m)
Unit Driver:	High quality 40mm speaker
Frequency:	20Hz-20KHz
Sensitivity:	105dB ± 3dB
Impedance:	32ohm
Battery:	3.7V/400mAh
Music Playing Time:	40 Hrs
Case Dimensions:	7.67" x 7.1" x 3.35" (195 x 180 x 85 mm)
Net Weight:	0.84 lbs (380g)





Connection:	Bluetooth 5.3+ 3.5mm plug
Wireless Range:	> 32 feet (10m)
Unit Driver:	High quality 40mm speaker
Frequency:	20Hz-20KHz
Sensitivity:	105dB ± 3dB
Impedance:	32ohm
Battery:	3.7V/400mAh
Music Playing Time:	40 Hrs
Case Dimensions:	7.67" x 7.1" x 3.35" (195 x 180 x 85 mm)
Net Weight:	0.84 lbs (380g)

**38<sup>dB</sup> ↓**

**ANC ( ACTIVE NOISE CANCELLING TECHNOLOGY)**

**Bluetooth**

**BLUETOOTH WIRELESS CONNECTIVITY**

**24 HOUR TALK & LISTEN TIME**

**ERGONOMIC DESIGN**

**FOLDABLE DESIGN**

Works with:

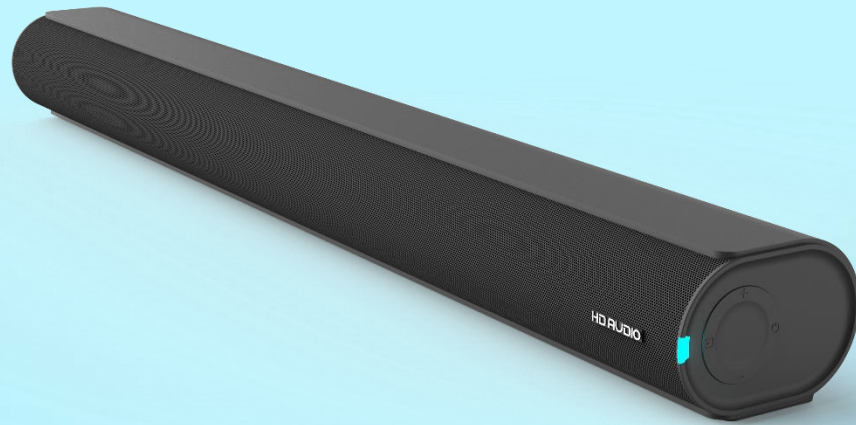
Smart Phone, Notebook, Computer, MAC OS

**MULTI-PLATFORM COMPATIBILITY**





# Speakers



- RMS 60W
- Full range 2.25" /6Ω 15W\*4
- Bluetooth 5.3, Optical, USB, AUX, Coaxial, HDMI
- DSP (EQ): Music > Dialogue >Movie
- Inputs: Bluetooth 5.3/ARC/OPT/AUX/USB
- Frequency Range: 60HZ-20KHZ
- Soundbar Dimension (mm): L704\*W103\*H72

### DOLBY DIGITAL 5.1 SURROUND SOUND



### EASY SET-UP

Quick, seamless connection to your TV

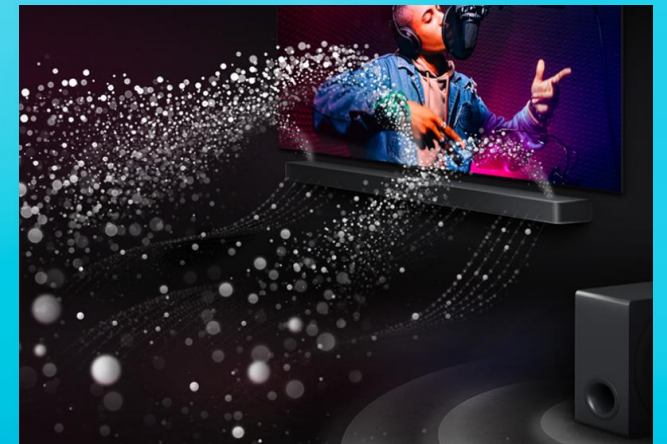
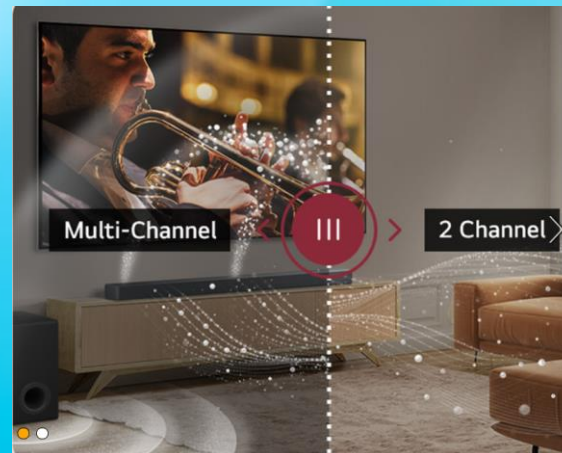
Low Profile Design Won't Block your TV

INCREDIBLE  
ROOM-FILLING  
SURROUND SOUND



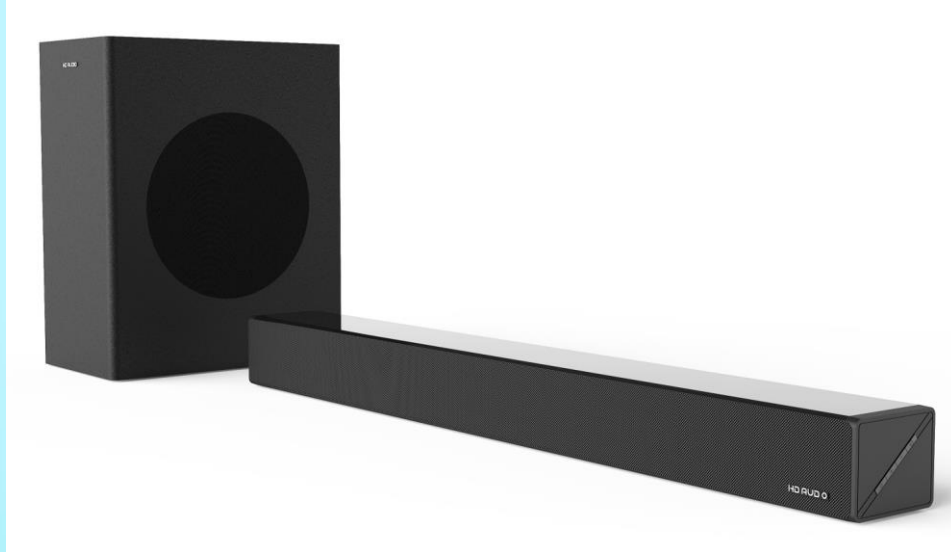


- Mid-woofer Speaker: 6.5"/40W x1
- Tweeter Drivers: 2.25"/10W x4
- DSP (EQ): Music > Dialogue >Movie
- Inputs: Bluetooth 5.3/ARC/OPT/AUX/USB
- Frequency Range: 50HZ-18KHZ
- Soundbar Dimension (mm): L720\*W109\*H72
- Subwoofer Dimension(mm): L 120\*W250\*H470

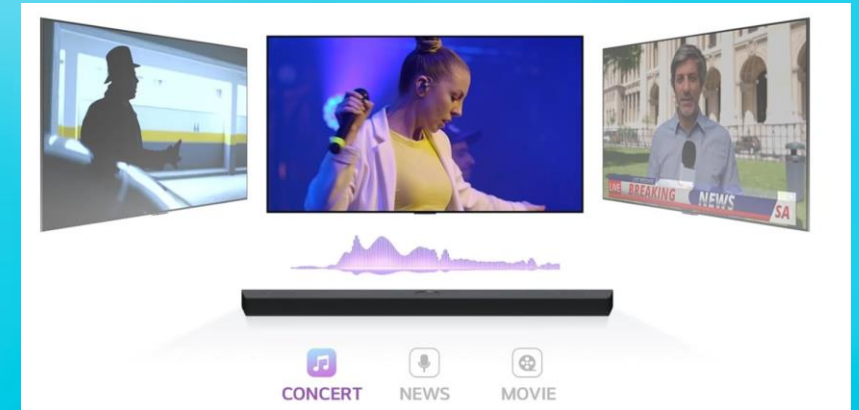
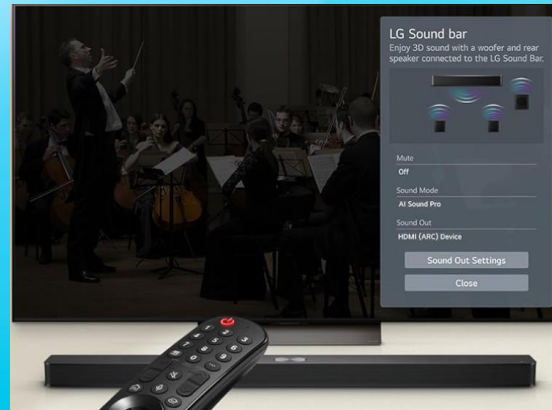


### Xtream S13

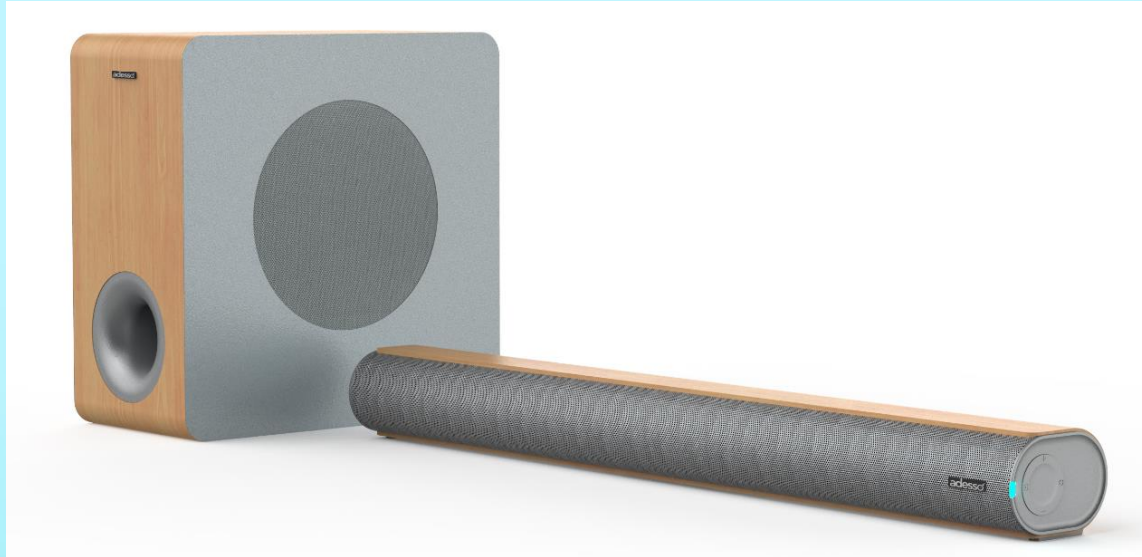
#### Bluetooth SoundBar Speaker



- RMS 120W
- Full range 2.25" / 15W \*4  
+ Subwoofer 6.5" /60W \*1
- Bluetooth 5.3, LED display, ARC HDMI
- Optical, USB, AUX, FM
- Soundbar : L720\*W109\*H72
- subwoofer:L160\*W320\*H320



## Xtream S9 Bluetooth SoundBar Speaker and Woofer



- RMS 100W
- woofer Speaker: 6.5"/40W x1
- +Mid-range speaker: 2.25"/10W x4
- +Silk Dome Tweeter: 1"/10W x2
- DSP (EQ): Music > Dialogue >Movie
- Inputs: Bluetooth 5.3/ARC/OPT/AUX/USB
- Frequency Range: 40HZ-20KHZ
- Soundbar Dimension (mm): L704\*W103\*H72
- Subwoofer Dimension(mm): L160\*W320\*H320



## Xtream S10 Bluetooth SoundBar Speaker



- Output Power: 100W
- Mid-woofer Speaker: 3.5"/30W x2
- Tweeter Drivers: 2.25"/10W x4
- DSP (EQ): Music > Dialogue > Movie
- Inputs: Bluetooth 5.3/ARC/OPT/AUX/AUX OUT/USB
- Frequency Range: 50HZ-20KHZ
- Soundbar Dimension (mm): L982\*W162\*H75



## Xtream SB03



- Output Power: RMS: 30W
- Full-range Speaker: 2.25"/ 15W x2
- DSP (EQ): Music > Dialogue > Movie
- Inputs: Bluetooth 5.3/ARC/OPT/AUX/AUX OUT/USB .
- Frequency Range: 60HZ-1 8KHZ
- Soundbar Dimension (mm): L420\*W109\*H72
- Selling point:
  1. New product
  - 2, good sound quality, with DSP
  - 3, lot of interface

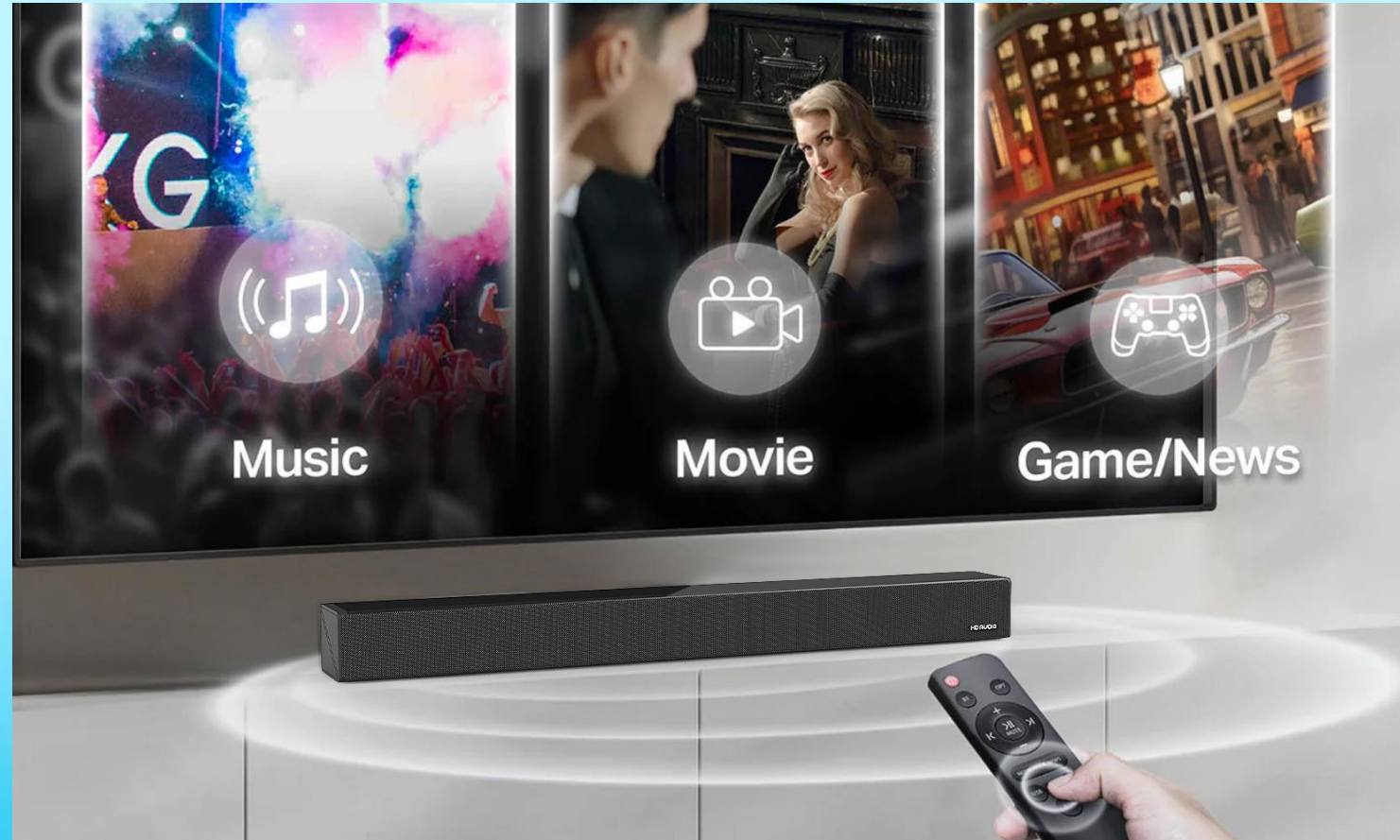


### Xtream SB03P-01



- Output Power: RMS: 40W
- Full-range Speaker: 2.25"/ 10W x4
- DSP (EQ): Music > Dialogue >Movie
- Inputs: Bluetooth 5.3/ARC/OPT/AUX /AUX OUT/USB
- Frequency Range: 60HZ-1 8KHZ
- Soundbar Dimension (mm): L720\*W109\*H72

1. New product, more large cabinet
- 2, lot of interface





## Xtream SB07PD

- Mid-woofer Speaker: 6.5"/40W x1
- Tweeter Drivers: 2.25"/10W x4
- DSP (EQ): Music > Dialogue >Movie
- Inputs: Bluetooth  
5.3/ARC/OPT/AUX/USB
- Frequency Range: 50HZ-18KHZ
- Soundbar Dimension (mm):  
L720\*W109\*H72
- Subwoofer Dimension(mm): L  
120\*W250\*H470
- Selling point:
  1. unique design,
  - 2, very good sales in the European market
  3. The clear sound makes it very popular



## Xtream SB10



- Output Power: 100W
- Mid-woofer Speaker: 3.5"/30W x2
- Tweeter Drivers: 2.25"/10W x4
- DSP (EQ): Music > Dialogue >Movie
- Inputs: Bluetooth 5.3/ARC/OPT /AUX/AUX OUT/USB
- Frequency Range: 50HZ-20KHZ
- Soundbar Dimension (mm): L982\*W162\*H75
- Selling point:
  1. Sky horn, 3D surround sound
  - 2, Built-in 2.1, unique look
  3. Very good sound effect, space saving





BS1204

**RMS: 12W**

Output power: 12W

Weight low frequency:  $\Phi 66\text{mm}/3\Omega 12\text{W}$

Bluetooth: 5.3

Function: Bluetooth/TF/FM

Battery: 1800MA

Material: ABS + Silicone + mesh

Product dimensions: 125\*125\*110MM

-  IPX6
-  TF
-  TWS
-  FM
-  LED
-  Bluetooth





BS1202

**RMS: 12W**

Output power: 12W

Weight low frequency:  $\Phi 66\text{mm}/3\Omega 12\text{W}$

Bluetooth: 5.3

Function: Bluetooth/USB/TF/FM

Battery: 1800MA

Material: Silicone + mesh

Product dimensions: 114\*114\*132MM



IPX6



TF



TWS



FM

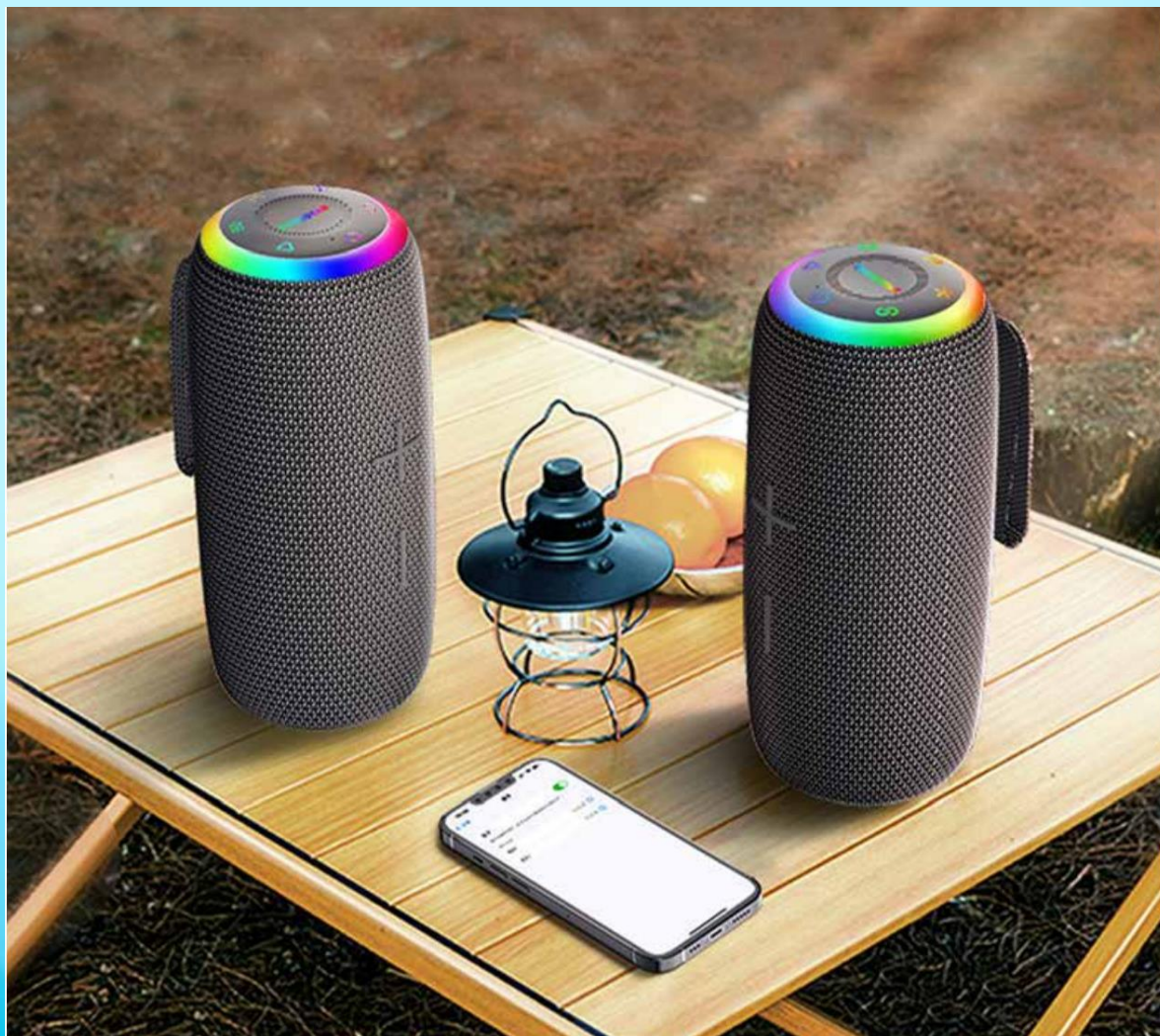


LED



USB





BS6001

**RMS: 60W**

Output power: 60W

Speaker size: 4Ω/30W\*2 78mm

Bluetooth: 5.0

Function: Bluetooth/USB/AUX/TF/Extension

Battery: 2600MA

Material: ABS + Silicone + mesh

Product dimensions: 249\*95\*95MM



IPX6



TF



TWS



USB



LED



AUX IN

