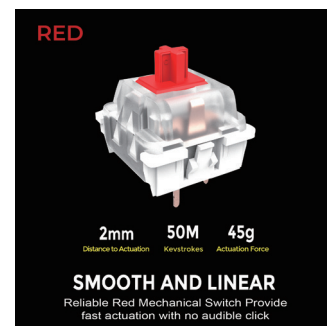


EasyTouch 1300

Wired/Wireless/Bluetooth Multi-OS Illuminated Mechanical VIA Keyboard
With CoPilot Ai Hotkey



■ Red Mechanical Switches

The Red mechanical switch provides a quiet and tactile feedback where you feel and hear clearly when a key has been pressed. These switches are also built to last with a lifespan of 50 million keystroke lifecycle.

■ CoPilot Ai Hotkey

The Copilot AI hotkey on your keyboard provides instant access to an advanced AI assistant designed to assist you in various tasks. Simply press the designated hotkey, and Copilot AI will be ready to generate code, provide creative suggestions, or assist you with language-related tasks. It's your quick and efficient way to harness the power of AI right at your fingertips.

■ Illuminated

The backlit LEDs have a adjustable RGB light that is ideal for a place with low light. With the touch of the lighting button, you can adjust brightness.

■ Multi OS Layout

Our keyboard's multi-OS layout feature is designed for versatility, catering to users across various operating systems. With the ability to seamlessly switch between layouts for different operating systems such as Windows, macOS.

■ Rechargeable battery

The keyboard is equipped with a built-in 3000mAh battery, ensuring long-lasting usage and durability. You can enjoy extended periods of typing without worrying about frequent recharging.

■ Hot Swappable

Effortlessly personalize your gaming setup with our Easytouch keyboard's convenient hot-swappable design. Swap keycaps and switches easily using the included keycap/switch puller, allowing you to customize your keyboard without any extra tools.

■ Gasket Structure

The Easytouch 1300 features a unique Gasket Structure that filling cotton add between the PCB and the positioning board, reduce the noise of the shaft knocking and provide a better type feeling.



Mechanical Switch Illuminated



CoPilot Ai Hotkey



Multi OS Layout



50 million Keystrokes

Keyboard Specifications:

Key Layout:	104-key US Layout
Key Type:	Mechanical Switch (Red)
Battery:	3000 mAh
Illumination:	RGB
OS Layout:	Multi-OS
Connection:	Wired USB/2.4Ghz,Bluetooth
Dimensions:	19 x 7.3 x 1.6" (485x186x41mm)
Weight:	2.8 lbs. (1123g)

Requirements:

Operating System:	Windows® 7/8/10/11 and later, MacOS 10.4 and above
Connectivity:	An available USB port/Bluetooth

Includes:

Easytouch 1300 Multi-OS Illuminated Mechanical Keyboard
Quickstart Guide

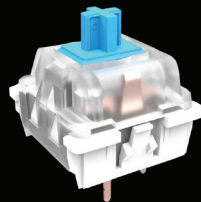
Shipping Information:

Item	UPC Code	Box Dimensions	Box Wt.	Qty/Ctn
Easytouch1300	783750014144	19.5 x 7.5 x 2"	2.25 lbs	10



Available Mechanical Switches:

BLUE

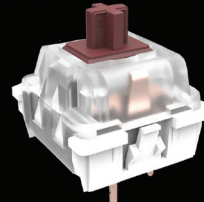


2.2mm **50M** **60g**
Distance to Actuation Keystrokes Actuation Force

CLICKY AND TACTILE

Reliable Blue Mechanical Switch Provides tactile actuation with a clear audible click

BROWN

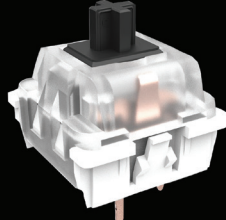


2.2mm **50M** **55g**
Distance to Actuation Keystrokes Actuation Force

QUIET AND TACTILE

Reliable Brown Mechanical Switch Provide fast actuation with light tactile feedback

BLACK

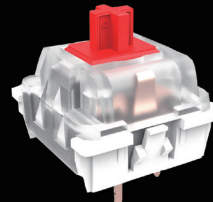


2mm **50M** **60g**
Distance to Actuation Keystrokes Actuation Force

POWERFUL AND LINEAR

Reliable Black Mechanical Switch Provide powerful actuation with no audible click

RED



2mm **50M** **45g**
Distance to Actuation Keystrokes Actuation Force

SMOOTH AND LINEAR

Reliable Red Mechanical Switch Provide fast actuation with no audible click