



# iMouse™ V10

Wireless Vertical Ergonomic Mouse



Model: iMouse™ V10

## QuickGuide

English

www.adesso.com

①

### CONTENT



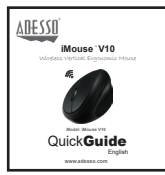
iMouse™ V10



USB Wireless Receiver

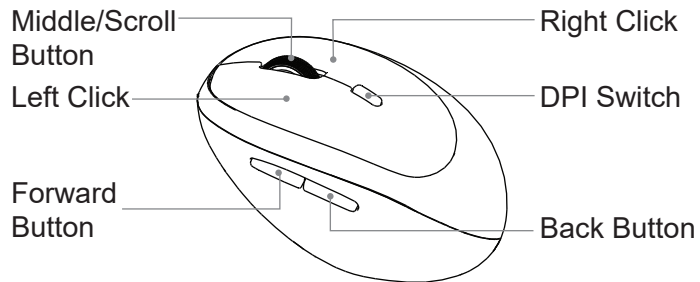


AA Battery (1)



Quick Start Guide

### DESCRIPTION



④

### LIMITED WARRANTY

Adesso® provides a one year limited warranty for all of its products against defects in materials and workmanship.

During this period, Adesso® will repair or replace any product which proves to be defective. However, Adesso® will not warrant any product which has been subject to improper handling, abuse, negligence, improper installation or unauthorized repair. The warranty will not cover products installed with components not approved by Adesso® and products where the sealed assembly trace has been broken.

If you discover a defect, Adesso® will, at its option, repair or replace the product free of charge, provided you return it during the warranty period with freight charges pre-paid to Adesso®. Before returning any product, you must obtain a Return Merchandise Authorization number (RMA). This RMA # must be clearly marked on the outside of the package you are returning for warranty service. Be certain to also include your name, shipping address (no PO Boxes), telephone number, and a copy of the invoice showing proof of purchase in the package.

### SUPPORT

We have listed most of our FAQ's (Frequently Asked Questions) at: <http://www.adesso.com/faqs.asp>. Please visit our FAQ Service & Support pages before you contact our E-mail or Telephone Support.

**Email Support:** If our FAQ's do not help you resolve your issues, please email [support@adesso.com](mailto:support@adesso.com)

**Telephone Support:**  
Toll Free: (800) 795-6788  
9:00AM to 5:00PM PST Monday - Friday

②

### INSTALLATION

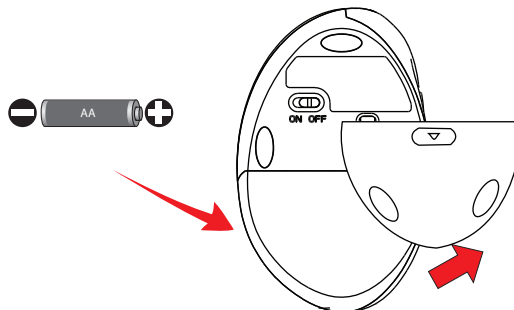
1. Turn on your computer.



Power ON



2. Take off the battery cover and insert the batteries.



⑤

### INTRODUCTION

The special vertical ergonomic design with a soft rubber grip of the iMouse™ V10 creates a unique and comfortable user experience. Its two buttons located conveniently on the side allow for faster back and forward browsing control. There are three available levels of DPI resolutions to choose from (800/1200/1600) and with its 2.4 GHz Radio Frequency technology, the iMouse™ V10 is wireless up to a range of 30 feet. To conserve battery power, there is a built-in On/Off power switch as well as an indicator light letting you know when it is time to replace your battery. iMouse™ V10 also comes with a mini USB receiver that connects automatically without any hassle.

### FEATURES

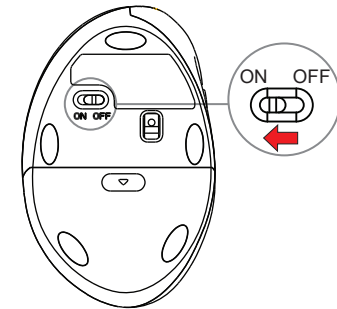
- 2.4 GHz Radio Frequency Wireless Technology
- Vertical Ergonomic Design with Optical Sensor
- Adjustable Resolution between 800/1200/1600 DPI
- Six buttons: (Left / Right Mouse Click, Back/ Forward Button, DPI Switch, Scroll Wheel & Middle Button)
- Dimensions: 4.2" x 2.6" x 2.3" (105 x 66 x 58 mm)
- Weight: 0.3 lb. (113 g)

### REQUIREMENTS

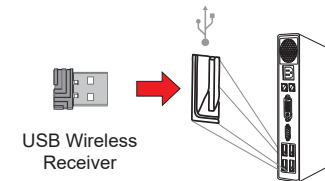
- Operating system: Windows® 7 & above
- An Available USB port

③

3. Switch to On. LED indicator will blink RED shortly while connecting.



4. Insert the wireless receiver into your computer USB port. Your operating system will automatically detect and connect the device.



⑥