



iMouse S200 Bluetooth® Ergo Mini Mouse



Model: iMouse S200

QuickGuide

English

www.adesso.com

①

LIMITED WARRANTY

Adesso provides a one year limited warranty for all of its products against defects in material and workmanship.

During this period, Adesso will repair or replace any product which proves to be defective. However, Adesso will not warranty any product which has been subject to improper freight handling, shipping abuse, neglect, improper installation or unauthorized repair. The warranty will not cover products installed with components not approved by Adesso and products where the sealed assembly trace has been broken.

If you discover a defect, Adesso will, at its option, repair or replace the product at no charge to you provided you return it during the warranty period with freight charges pre-paid to Adesso. Before returning any product, you must obtain a Return Merchandise Authorization number (RMA). This RMA # must be clearly marked on the outside of the package you are returning for warranty service. Be certain to also include your name, shipping address (no PO Boxes), telephone number, and a copy of the invoice showing proof of purchase in the package.

SUPPORT

We have listed most of our FAQ's (Frequently Asked Questions) at: <http://www.adesso.com/faqs.asp>. Please visit our FAQ Service & Support pages before you contact our E-mail or Telephone Support.

Email Support: If our FAQ's do not help you resolve your issues, please email support@adesso.com

Telephone Support:
Toll Free: (800) 795-6788
9:00AM to 5:00PM PST Monday - Friday

②

INTRODUCTION

Experience new levels of productivity with the Adesso iMouse S200 Bluetooth Ergo Mini Mouse. This advanced Bluetooth mouse offers you 30 feet of wireless freedom and eliminates the constraints wired mices often cause. Its optical sensor tracking method lets you work on any surface with better speed and accuracy. In addition, the mouse includes three distinct levels of DPI resolution (1000/ 1500/ 2000) for precise targeting (1000 DPI), quick response (1500 DPI) or fast maneuvers (2000 DPI). Easily switch between these DPI resolutions with the DPI Switch button located on the top of mouse. All these features, along with its ergonomic design, provide great control, response and comfort with minimal hand movement.

SPECIFICATIONS

- Tracking Method: Optical Sensor
- Connectivity: Bluetooth 3.0 Wireless Technology with backward compatibility (2.1, 2.0 & 1.1)
- Wireless Range: Up to 30 ft. (10m)
- Adjustable DPI: 3 Levels - (1000/ 1500/ 2000)
- Features: DPI Switch, Scroll Wheel, Auto Sleep Mode, Power Switch, Connect Button & (2) Internet Navigation Buttons
- Indicator: Low Battery
- Hand Orientation: Right
- Power: (2) AAA Batteries (included)

REQUIREMENTS

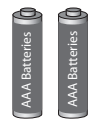
- Operating System: Windows 10, 8, 7, Vista, XP
Mac OS X 10.4 and above
- Connectivity Technology: Bluetooth 3.0, 2.1, 2.0 & 1.1

③

CONTENTS



A
Bluetooth® Mouse



B
(2) AAA Batteries



C
Quick Start Guide

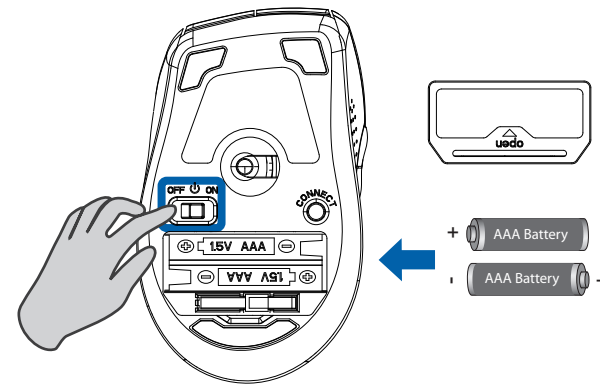
INSTALLATION

For Windows Users



Note: For first time setup, a wired mouse will be required to navigate and control during the installation process.

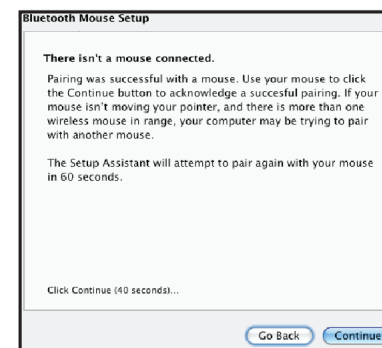
1. Insert (2) AAA batteries into the mouse and turn the power switch to **ON**.



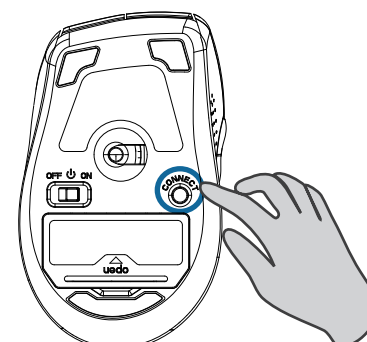
④

2. Turn **ON** your computer and let your computer load completely.

3. Turn Mac power **ON**. Once system completes loading, the wizard for Bluetooth Mouse will come up.

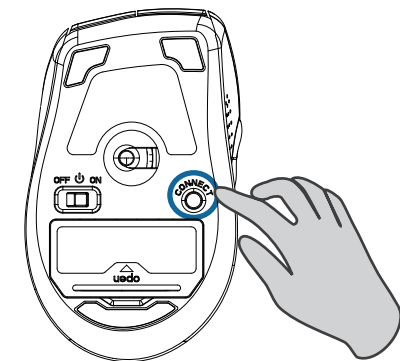


4. Press **CONNECT** button on Adesso Bluetooth Mouse. System will detect mouse and display confirmation message if the connection is successfully established. The Bluetooth Mouse is ready for use now.



⑤

3. Press **CONNECT** button on Adesso Bluetooth Mouse to make it discoverable.



4. Click the **Start** button , click **Control Panel**, click **Hardware and Sound**, and then click **Add a Bluetooth Device**.

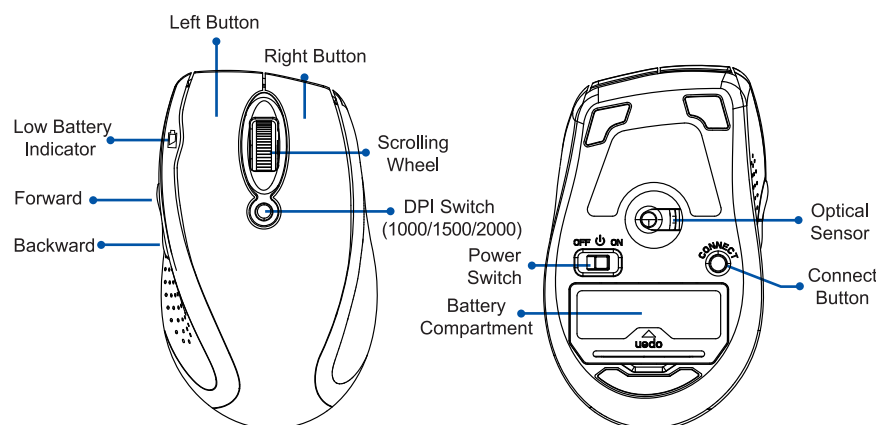
5. Select **Adesso Bluetooth 3.0 Mouse** and click **Next**.



6. Wait for Windows install the driver. The Bluetooth mouse is ready for use now.

⑥

DESCRIPTION



⑦

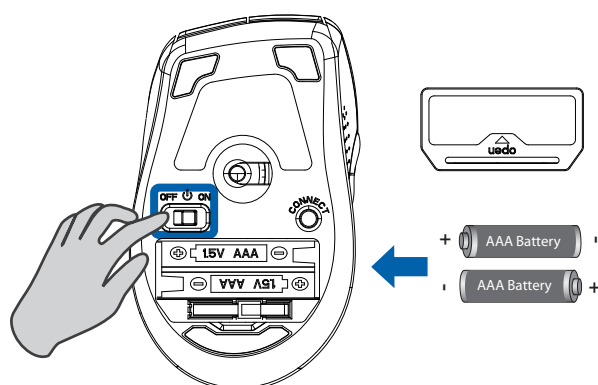
For Mac Users



Note: For first time setup, ensure Mac Bluetooth connection is **ON**. To verify Bluetooth connection is active go to "**System Preferences**" click the Bluetooth icon and make sure you see "**Bluetooth: On**" under the "**Settings**" tab. If it's not turned on, click "**Turn Bluetooth On**".

1. Shut down Mac, unplug and/or deactivate all connected mice.

2. Insert (2) AAA batteries into the mouse and turn the power switch to **ON**.



⑧

TIPS:

- We suggest to turn "**OFF**" the mouse when leaving your desk for more than an hour to save battery life for longer lasting use.
- Bluetooth wireless range is up to 30 ft (10 m).

TROUBLESHOOTING

If Bluetooth mouse cannot be operated, please try the following:

1. Make sure batteries have enough power and been inserted into the battery compartment correctly. Switch the device to **ON**.
2. Make sure Bluetooth on your computer turn **ON**.
3. Press **CONNECT** once on the bottom of the mouse. (refers page 5 to 8)

Note: Wireless phone, routers and other devices that uses 2.4GHz frequency might cause interference with Bluetooth device. Please relocate such wireless appliances away from the Bluetooth device.

The Back / Forward mouse buttons are not supported under Mac OSX.

⑨