



## iMouse™ T30

Wireless Programmable Ergonomic Trackball Mouse



Model: iMouse™ T30

## QuickGuide

English

www.adesso.com

### LIMITED WARRANTY

Adesso provides a one year limited warranty for all of its products against defects in material and workmanship.

During this period, Adesso will repair or replace any product which proves to be defective. However, Adesso will not warranty any product which has been subject to improper freight handling, shipping abuse, neglect, improper installation or unauthorized repair. The warranty will not cover products installed with components not approved by Adesso and products where the sealed assembly trace has been broken.

If you discover a defect, Adesso will, at its option, repair or replace the product at no charge to you provided you return it during the warranty period with freight charges pre-paid to Adesso. Before returning any product, you must obtain a Return Merchandise Authorization number (RMA). This RMA # must be clearly marked on the outside of the package you are returning for warranty service. Be certain to also include your name, shipping address (no PO Boxes), telephone number, and a copy of the invoice showing proof of purchase in the package.

### SUPPORT

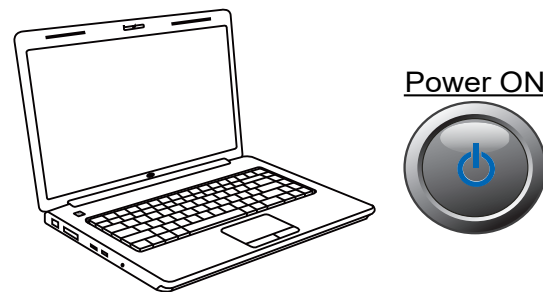
We have listed most of our FAQ's (Frequently Asked Questions) at: <http://www.adesso.com/faq/>. Please visit our FAQ Service & Support pages before you contact our E-mail or Telephone Support.

**Email Support:** If our FAQ's do not help you resolve your issues, please email [support@adesso.com](mailto:support@adesso.com)

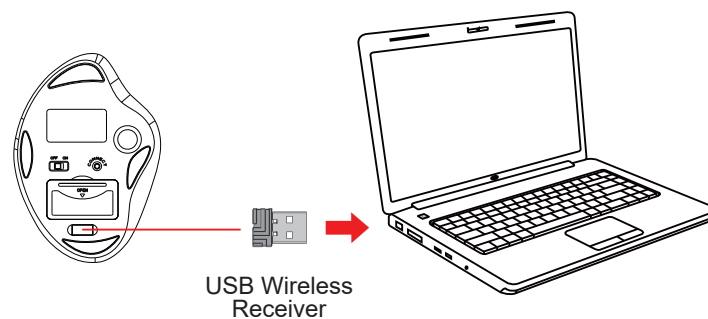
**Telephone Support:**  
Toll Free: (800) 795-6788  
9:00AM to 5:00PM PST Monday - Friday

### HARDWARE INSTALLATION

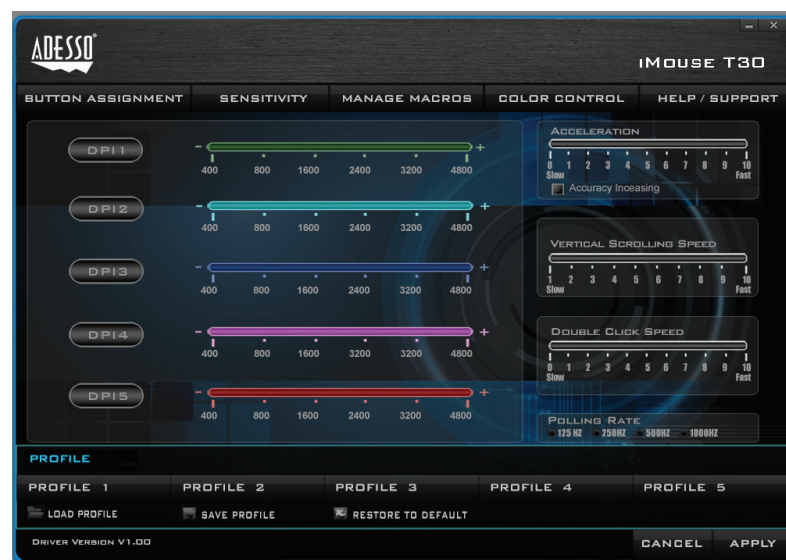
1. Turn on your computer.



2. Remove the back battery cover of the unit and locate the wireless usb receiver. Now insert it into your computer's USB port and your operating system will automatically detect and install the device.



6. Click on "Sensitivity" to change the speed of your mouse cursor as well as adjust DPI settings, "Manage Macros" to assign macro keys for your mouse, "Color Control" to change the color of the scroll wheel, and "Support" for product support information.



### TIPS

- When low on batteries, the Scroll Wheel LED light will flash RED repeatedly.
- The Sleep Mode will enter after 8 minutes of idle time to save power.
- The mouse can wake up in 0.1 second by Left Click button press.
- To conserve battery power, please turn "OFF" the device when it's not in use.

### INTRODUCTION

Meet one of the newest models of the Adesso Trackball product line, the Adesso iMouse™ T30. It incorporates the palm grip design where each user can rests his entire hand over the mouse. This design encourages users to move their cursor by rotating the track ball using their thumb and reduces the need of hand movement. It is cable-free by utilizing the 2.4 GHz radio frequency technology, offering a wireless range of up to 30 feet. It's also fully programmable, meaning every mouse button can be customized to your preferred function with its programmable driver. With its 5 levels of DPI resolutions (400-4800), the optical trackball provides superior accuracy and smooth motion, reducing hand movement and space. This mouse trackball is also easy to maintain - just push the trackball outward from its back, clean it and push it back in place. Its ergonomically contoured large size trackball further complete its ergonomic advantages, making your daily computing tasks more comfortable and stress-free.

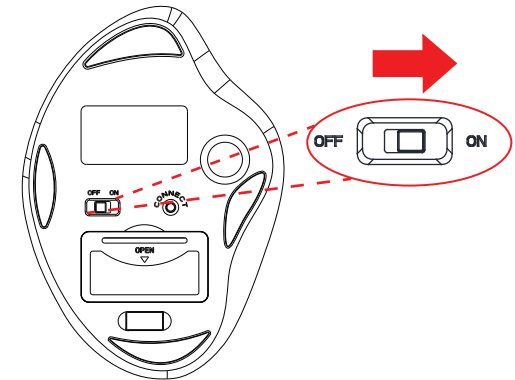
### SPECIFICATIONS

Hand Orientation:	Right Handed
Tracking Method:	Optical Sensor
Connection:	2.4 GHz Radio Frequency Wireless Technology
DPI Resolution:	400-4,800 DPI Range
Working Range:	up to 30 feet (10 m)
Battery:	2 AAA Batteries
Buttons:	7 buttons(Forward & Backward, Left & Right, Scroll Wheel, DPI UP/Down) Customizable by driver.
Trackball Diameter:	1.3" (34 mm)
Dimensions:	5.5" x 3.8" x 2.0" (140 x 98 x 51 mm)
Weight:	0.3 lb. (135g)

### REQUIREMENTS

- Operating System: Window® 7 or above
- An available USB port for the usb wireless receiver

3. Turn on your device with the ON/OFF switch. The device will automatically pair with the inserted USB receiver.



### ADVANCED DRIVER FEATURES

The iMouse T30 comes with a driver for customization which allows you to customize your mouse to your preference. Change the DPI colors, reassign mouse buttons, and assign macro keys all with this included driver.

1. Please Insert below URL link into your web browser to download the iMouse T30 Driver:  
[https://download.adesso.com/software/iMouse\\_T30\\_driver.zip](https://download.adesso.com/software/iMouse_T30_driver.zip)
2. When the driver has finished downloading, please locate the zipped folder and unzip it to locate the setup.exe file.
3. Then execute the setup.exe to begin driver installation. Please follow the installation wizard prompt to finish the installation process.

### MACRO KEYS

1. While name a Macro key, you have to press "Enter" in order to have the driver to set up the macro key. Without press this Enter key, the Macro key won't be named.
2. While user delete a macro key from "Manage Macros", you have to delete the bottom assignment at the same time to disable the previous Macro key setting.

