



iMouse E7

Programmable Vertical Ergonomic Lefthanded Mouse



Model: iMouse E7

QuickGuide

English

www.adesso.com

①

LIMITED WARRANTY

Adesso provides a one year limited warranty for all of its products against defects in material and workmanship.

During this period, Adesso will repair or replace any product which proves to be defective. However, Adesso will not warranty any product which has been subject to improper freight handling, shipping abuse, neglect, improper installation or unauthorized repair. The warranty will not cover products installed with components not approved by Adesso and products where the sealed assembly trace has been broken.

If you discover a defect, Adesso will, at its option, repair or replace the product at no charge to you provided you return it during the warranty period with freight charges pre-paid to Adesso. Before returning any product, you must obtain a Return Merchandise Authorization number (RMA). This RMA # must be clearly marked on the outside of the package you are returning for warranty service. Be certain to also include your name, shipping address (no PO Boxes), telephone number, and a copy of the invoice showing proof of purchase in the package.

SUPPORT

We have listed most of our FAQ's (Frequently Asked Questions) at: <http://www.adesso.com/faqs.asp>. Please visit our FAQ Service & Support pages before you contact our E-mail or Telephone Support.

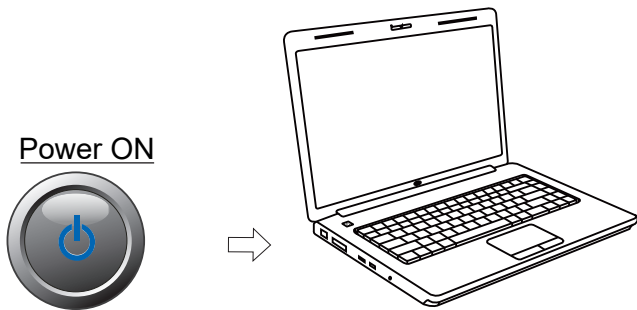
Email Support: If our FAQ's do not help you resolve your issues, please email support@adesso.com

Telephone Support:
Toll Free: (800) 795-6788
9:00AM to 5:00PM PST Monday - Friday

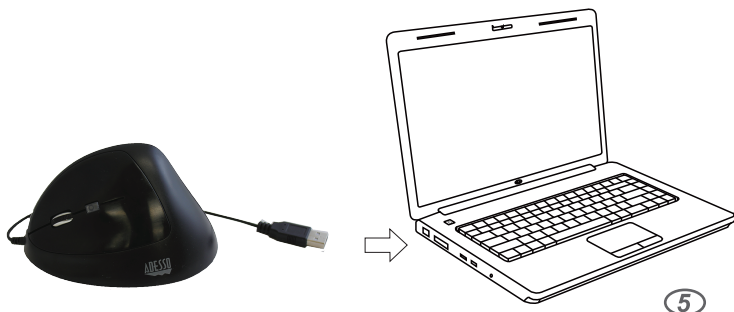
②

HARDWARE INSTALLATION

1. Turn on your computer.

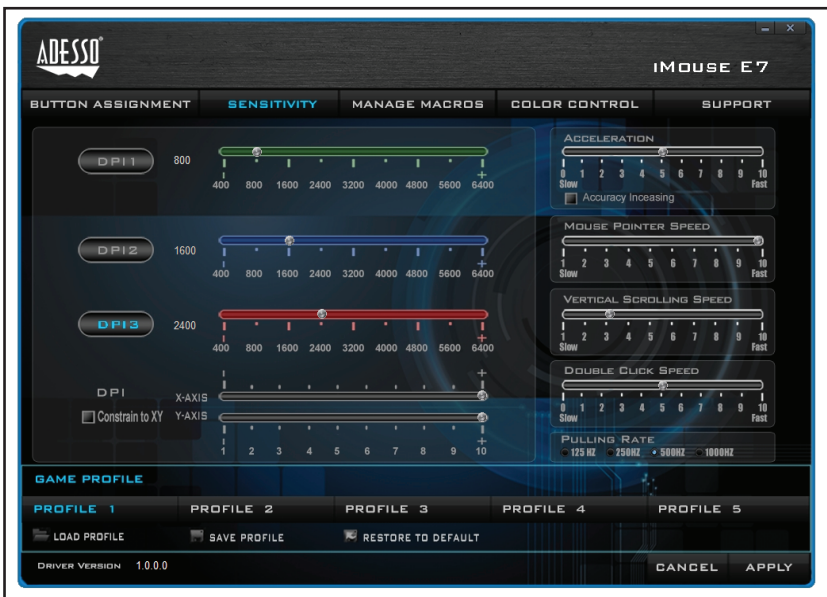


2. Plug in the USB cable of your iMouse E7 into your computer's USB port. Your operating system will automatically detect and assign an initial plug n play driver.



⑤

4. Once you click on the Gaming Mouse Icon, it will bring up the driver menu as shown below. Click on "Sensitivity" to change the speed of your mouse cursor as well as adjust DPI settings. Click on "Manage Macros" to assign short commands to your mouse.



⑧

INTRODUCTION

Adesso introduces relief and comfort for left handed users & gamers with the iMouse E7 USB Vertical Lefthanded Mouse! If your wrist pain just won't seem to go away, try a specially designed vertical mouse that completely changes your stance and keeps your hand in its natural "handshaking" position. The shape is thoroughly designed for natural comfort and easy-to-reach mouse buttons. No finger stretching or reaching is needed to press or operate the buttons. For gaming, the built in DPI switch on the top allows for convenient adjustments of your browsing precision without even letting go of the Adesso iMouse E7. Optional advanced programming software will allow you to control and customize all 6 buttons, LED colors, and assign macro keys. The iMouse E7 also comes with 3 additional weights inside that you can remove or adjust for a sturdier or lighter feel depending on your preference. Start browsing the internet, your email, and achieve victory with various online games with the new Adesso iMouse E7 USB Vertical Lefthanded Mouse.

FEATURES

- Interface: USB
- Advanced Programming Driver Included
- Buttons: 6 Buttons (Left & Right Click, Back & Forward, DPI Switch, Scroll Wheel and Middle Button)
- Hand Orientation: Left
- DPI Resolution: Optical Type 800 / 1600 / 2400 (range of 400-6400 DPI resolution with multicolor DPI settings with driver.)
- 3 additional weights inserted @ 10g each for a sturdier, durable feel.
- Dimensions: 5" x 2.8" x 2.8" (123 x 75 x 65 mm)

REQUIREMENTS

- Operating system: Windows® 2000 / XP / Vista / 7 / 8 / 10
- Available USB port

③

NOTE:

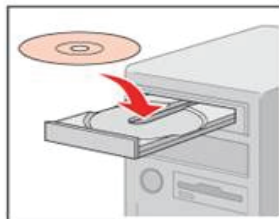
To remove or adjust the internal weights of your mouse, flip the mouse over and turn the circular compartment counter clockwise. Remove one, two, or all three weights depending on your preference. See image below for clarification.



DRIVER INSTALLATION

The iMouse E7 comes with a driver for customization which allows you to customize your mouse to your preference. Change the DPI colors, reassign mouse buttons, and assign macro keys all with this included driver.

1. Insert the Driver CD into your computer's CD-ROM drive for installation. If the software installer menu does not automatically run, please double click on your CD drive (e.g. D:, E:, etc..) and follow the step-by step prompts to install the driver.

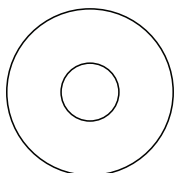


⑥

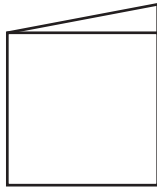
CONTENTS



Adesso iMouse™ E7

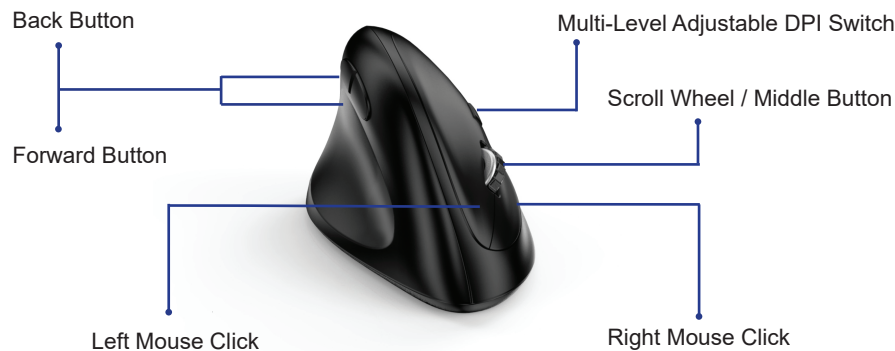


Driver CD




Quick Start Guide

DESCRIPTION



④

2. Once you have followed the installation steps, go into your "system tray" by clicking on the arrow located to the left of your Windows clock and click on the Gaming Mouse Icon ()

3. Once you click on the Gaming Mouse Icon, it will bring up the driver menu as shown below. Click on "Button Assignment" to change your mouse buttons.



⑦

5. Once you click on the Gaming Mouse Icon, it will bring up the driver menu as shown below. Click on "Color Control" to change, reassign or remove all mouse colors, if preferred.



⑨