



Xtream P400

Bluetooth Multimedia Headset with Charging Dock



Model: Xtream P400

QuickGuide

English

www.adesso.com

LIMITED WARRANTY

Adesso provides a one year limited warranty for all of its products against defects in material and workmanship.

During this period, Adesso will repair or replace any product which proves to be defective. However, Adesso will not warranty any product which has been subject to improper freight handling, shipping abuse, neglect, improper installation or unauthorized repair. The warranty will not cover products installed with components not approved by Adesso and products where the sealed assembly trace has been broken.

If you discover a defect, Adesso will, at its option, repair or replace the product at no charge to you provided you return it during the warranty period with freight charges pre-paid to Adesso. Before returning any product, you must obtain a Return Merchandise Authorization number (RMA). This RMA # must be clearly marked on the outside of the package you are returning for warranty service. Be certain to also include your name, shipping address (no PO Boxes), telephone number, and a copy of the invoice showing proof of purchase in the package.

SUPPORT

FAQs: <https://www.adesso.com/faqs/>

Email Support: support@adesso.com

Telephone Support: (800) 795-6788

9:00AM to 5:00PM PST MONDAY - FRIDAY

INTRODUCTION

The Adesso Xtream P400 is Multimedia Bluetooth Headset with Microphone that's lightweight, and designed for office use. Bluetooth connectivity ensures high-quality audio, long battery life, and support for a variety of devices.

Features:

| | |
|---------------------|------------------|
| Connection: | Bluetooth 5.0 |
| Wireless Range: | > 32 feet (10m) |
| Built-in Mic: | Omnidirectional |
| Speaker Driver: | 23mm |
| Battery: | 3.7V, 130mAh |
| Charging Time: | 2 Hours |
| Talk Time: | Up to 8 Hours |
| Stand by: | Up to 100 Hours |
| Product Dimensions: | 6.4 x 5.6 x 1.9" |
| Headset Weight: | 0.11 lb |
| Charge Base Weight: | 0.39 lb |

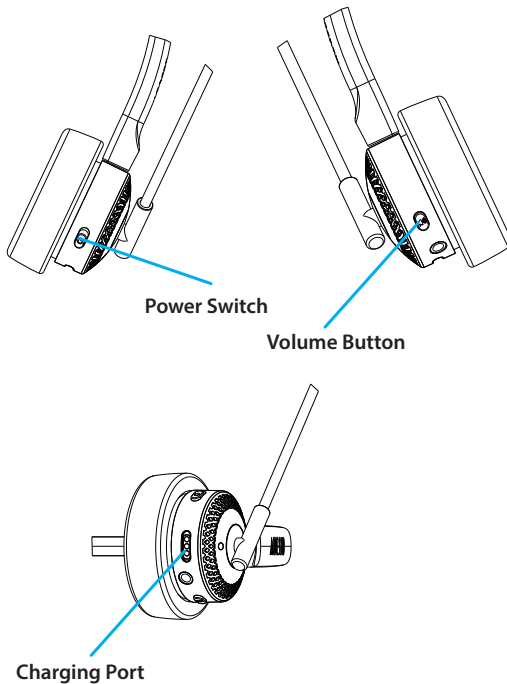
Requirements:

Bluetooth enabled device

CONTENTS



DESCRIPTION



GETTING STARTED

BLUETOOTH

1. Make sure the headset is in the off position by checking the power switch.
2. Toggle the power switch to the on position.
3. Follow the operating instructions of your bluetooth device to start the pairing process, typically this is done by going to a "Connect" or "Setup" menu and then selecting the option to search the bluetooth devices.
4. The device will find Adesso Xtream P400 and ask whether you are willing to connect to the headset. Press "Yes" or "Confirm" to confirm this action.
5. Enter pin 0000, and press "Yes" or "Confirm". If the connection was successful the blue LED will flash 2 times per second.

LED Colors

- Flashing Green - Charging (on dock)
- Solid Green - Fully Charged (on dock)
- Flashing Blue - Bluetooth Pairing
- Flashing Red - Low Battery

TROUBLESHOOTING

•What if the headphones will not power on?

If the headphones will not power on after turning on the power button, please ensure the headphones has been fully charged and try powering the headphones on again.

•What if the headphones will not charge?

If the status LED does not turn flashing green when you place the headset on the charging dock, please try charging the headphones by connecting it to a different USB power source.

•What if I'm unable to pair to headphones?

If you are not able to pair to the headphones, please try disabling bluetooth on your device. Power off the headphones, then power on the headphones. Then, enable bluetooth on your device. The headphones will appear as Xtream P400, click or tap on it to pair

•What if I hear no sound through headphones after pairing?

If you do not hear sound through your headphones, make sure the sound on your device is not muted and turned up.