



NuPrint 220B

Portable Bluetooth Industrial Thermal Printer



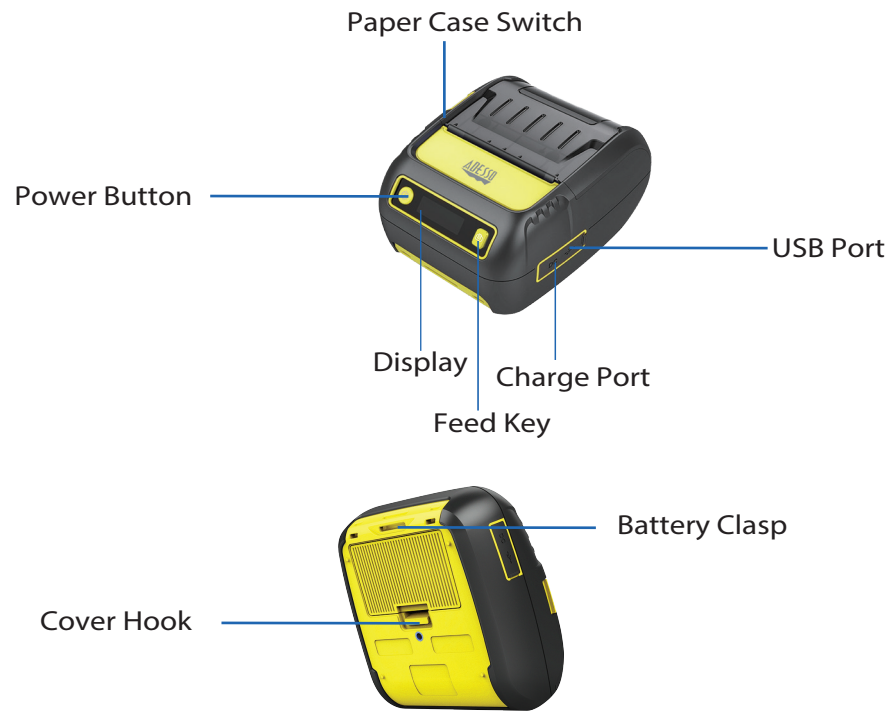
QuickGuide

English

www.adesso.com

①

DESCRIPTION



⑤

LIMITED WARRANTY

Adesso® provides a one year limited warranty for all of its products against defects in materials and workmanship.

During this period, Adesso® will repair or replace any product which proves to be defective. However, Adesso® will not warrant any product which has been subject to improper handling, abuse, negligence, improper installation or unauthorized repair. The warranty will not cover products installed with components not approved by Adesso® and products where the sealed assembly trace has been broken.

If you discover a defect, Adesso® will, at its option, repair or replace the product free of charge, provided you return it during the warranty period with freight charges pre-paid to Adesso®. Before returning any product, you must obtain a Return Merchandise Authorization number (RMA). This RMA # must be clearly marked on the outside of the package you are returning for warranty service. Be certain to also include your name, shipping address (no PO Boxes), telephone number, and a copy of the invoice showing proof of purchase in the package.

SUPPORT

We have listed most of our FAQ's (Frequently Asked Questions) at: <http://www.adesso.com/faqs.asp>. Please visit our FAQ Service & Support pages before you contact our E-mail or Telephone Support.

Email Support:

If our FAQ's do not help you resolve your issues, please email support@adesso.com

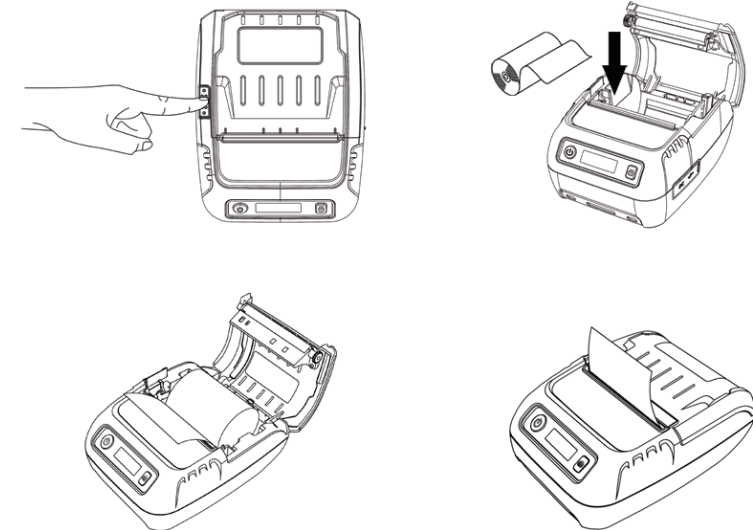
Telephone Support:

Toll Free: (800) 795-6788
9:00AM to 5:00PM PST Monday - Friday

②

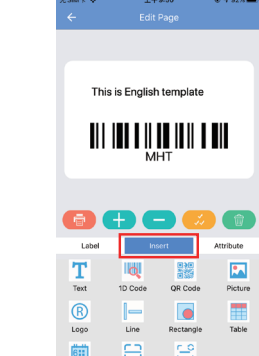
Installing The Paper Roll

1. Press the paper case switch button, open the cover (image 1)
2. Input the paper as the connect position (image 2)
3. Pull out part of the paper, close the cover, make sure the two ends of the case are closed correctly (image 3)
4. Cut the surplus paper (image 4)



⑥

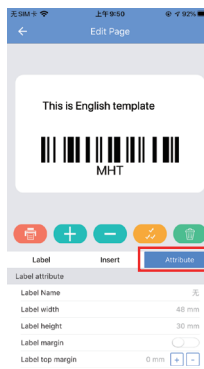
Edit the label's Contents



Click the words, QR code, then you can input the contents
Insert: words, barcode, image, logo, line, table and rectangle

Adjust the attribute

Select text, barcode and other objects.
Click attribute to change the corresponding attribute value
For example:
☐ Text size, bold, underline and other styles
☐ Rotation angle and position of one dimensional code
☐ Number of rows, columns, height and width of table



⑩

INTRODUCTION

The NuPrint 220B is an industrial, oil splash and dust proof, highly portable bluetooth printer designed to simplify your work and increase productivity.

SPECIFICATION

Printing Method	Thermal
Print Width	48mm
Print Density	384 dot / line
Print Speed	Max 90mm/s
Interface	USB+Bluetooth
Print Paper Width	58mm
Roll Diameter	50mm
Paper Thickness	0.06-0.08mm
Print Command	Compatible with ESC/TSPL
Character Size	24*24 point / 12*12 point / 12*24 point
Barcode Type	Code 39, Dode128, UPC-A, UPC-E, JAN13, Jan8, ITF, Code93, Codebar, QR, UTF-9
Input Buffer	10k Bytes
Power Adapter	Input AC100-240V; Output: DC9V/1A
Lithium Battery	1800mAh/7.4v
Charging Time	3 hours
Battery Life	500 times cycle charging
Working Environment Temperature	0°C-50°C, Humidity: 20%-85%
Storage Environment Temperature	-20°C-60°, Humidity: 5%-95%
Mechanical Properties	50KM
Operating System	Android, IOS, Windows 7, 8, 10, 11
SDK	IOS and Android
Language Code Page	CP-437, CP-737, CP-775, CP-850, CP-852, CP-855, CP-857, CP-858, CP-860, CP-862, CP-863, CP-864, CP-865, CP-866, CP-1251, CP-1252, CP-1253, CP-1254, CP-1255, CP-1256, CP-1257, UTF-8 (ALL LANGUAGE PRINTING)

REQUIREMENTS

- Connectivity interface: Android, IOS, Windows 7, 8, 10, 11
- Interface: Bluetooth®

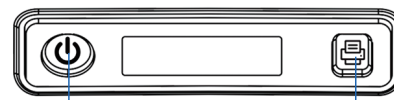
Battery Installation

- When inserting or removing the battery, make sure the printer is power off
- Insert the battery into the battery slot at the back of the printer in the direction of the arrow, press down and push the battery buckle forward until it clicks into place.



Powering On The Printer

1. Long press the power button for 2 seconds will turn on the printer
2. After powering on, press and hold the power button for 5 seconds to enter the setting interface, then each time you press the power button the screen will display in turn
3. Press the feed button to change the subcategory; long press the power button to save the settings and return to the main interface



Power Button Paper Feed Key

⑦

Fault Diagnosis

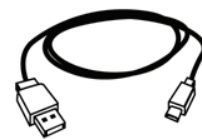
Fault	Fault Reason	Solution
When printing, the paper is feeding through, but no data is coming out	Reverse the loading of the printing paper	Please install the printing paper in the other direction
Printer is printing out blurry data	Printer has not been cleaned for a long time causing the printer head to be contaminated	Please clean the printer head
Printer is printing too fast causing data to be missed or blurry	Poor printing materials or speed and density is set incorrectly	Please set the printing speed and density correctly. Please use high quality materials

⑪

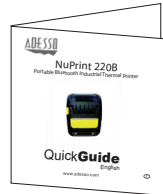
CONTENTS



A
NuPrint 220B



B
Charging Cable



C
Quick Start Guide

④

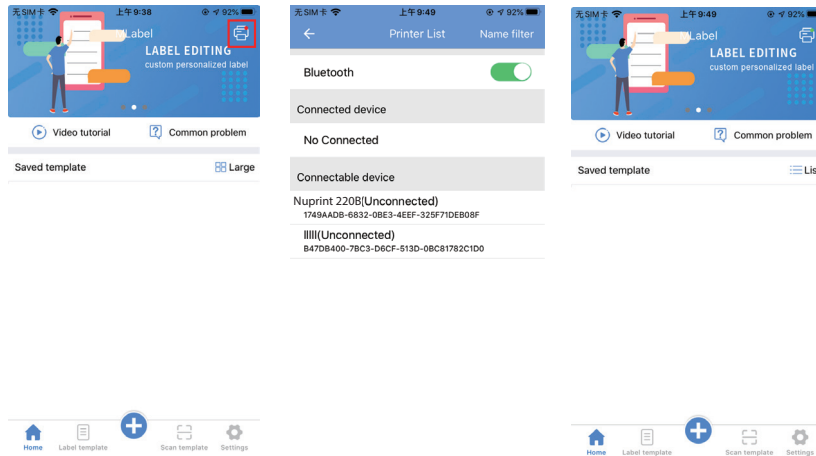
Label/Receipt App

- Scan the below QR code to download the app



Bluetooth Connection

1. First open the bluetooth settings of your device, then enter the "MLabel" app software, and click the following figure on the left picture
2. When the printer is found as shown in the middle picture, select the printer and click pair (pairing password is 0000)
3. If the display is working, it indicates that the connection was successful



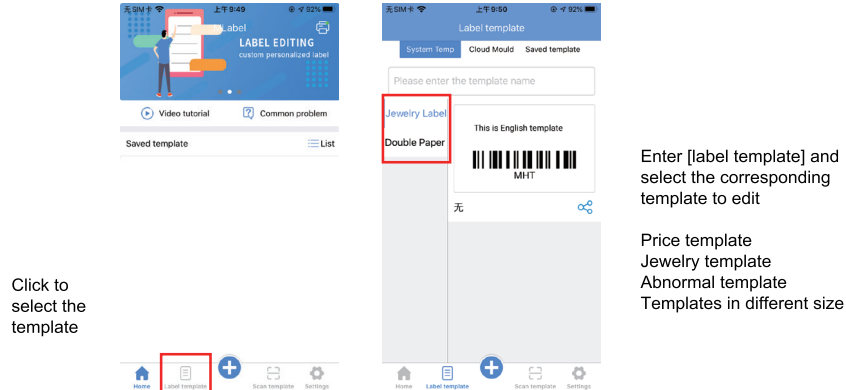
⑧

FAQ

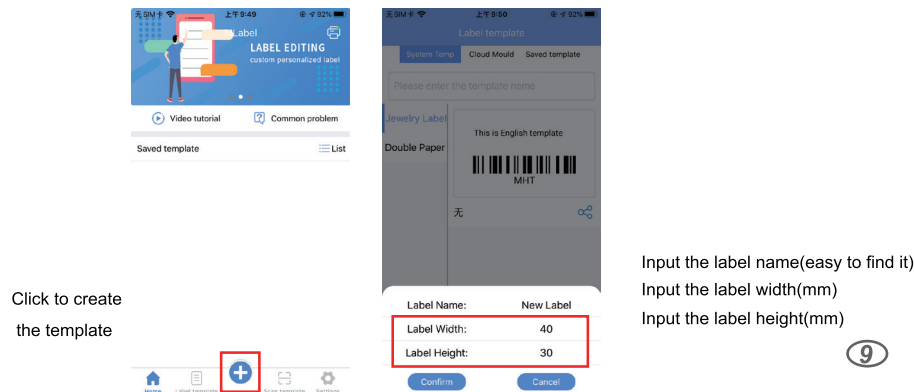
Questions	Answer
Why does my printer print out wrong codes?	Please use the TSPL instruction to print the label.
Why does my printer not respond when i try to print?	Printing commands for printing small tickets is ESC, and the printer needs to be adjusted to ESC.
Why does my printer not stay within clearance?	Please check the height setting and printing on the software, is the printing paper consistent? If so please view the printer's menu to set up the command
The interface displays update mode. What should i do?	Update mode is in rooting mode, long press the power key to exit
When the printer half prints, bluetooth disconnects, what should i do?	Bluetooth auto disconnects, please check if the printer has enough battery left.
The command is set correctly, the data is sent to the printer but no response, or printer prints blurry?	Please check whether the roller stop is placed correctly
I am having unstable charging	Please check whether the adapter interface is connected properly
The labels are printing with fuzziness tracing	Please use high quality material
Printer is auto shutting down	Please check whether the power supply ends of the adapter are in good contact, or set the automatic shutdown option in the menu as Never.

⑫

Method (1): label template (applicable to customized label or special label)



Method (2): create a new label (applicable to ordinary rectangular or square labels)



⑨